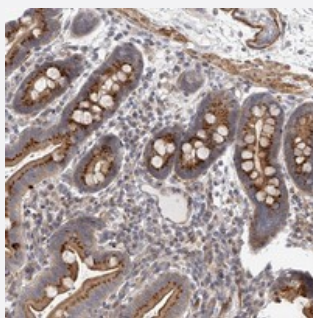


SLC37A1 polyclonal antibody

Catalog # PAB22445 Size 100 uL

Applications



Immunohistochemistry (Formalin/PFA-fixed paraffin-embedded sections)

Immunohistochemical staining of human duodenum with SLC37A1 polyclonal antibody (Cat # PAB22445) shows strong granular positivity in glandular cells.

Specification

Product Description	Rabbit polyclonal antibody raised against recombinant SLC37A1.
Immunogen	Recombinant protein corresponding to amino acids of human SLC37A1.
Sequence	IVKGELHKYCTAWDEADVRFSSQNRKSGSAAPHQLPDNETDCGWAPFDKNNY
Host	Rabbit
Reactivity	Human
Form	Liquid
Purification	Antigen affinity purification
Isotype	IgG
Recommend Usage	Immunohistochemistry (1:50-1:200) The optimal working dilution should be determined by the end user.
Storage Buffer	In PBS, pH 7.2 (40% glycerol, 0.02% sodium azide)
Storage Instruction	Store at 4°C. For long term storage store at -20°C. Aliquot to avoid repeated freezing and thawing.

Note

This product contains sodium azide: a POISONOUS AND HAZARDOUS SUBSTANCE which should be handled by trained staff only.

Applications

- Immunohistochemistry (Formalin/PFA-fixed paraffin-embedded sections)

Immunohistochemical staining of human duodenum with SLC37A1 polyclonal antibody (Cat # PAB22445) shows strong granular positivity in glandular cells.

Gene Info — SLC37A1

Entrez GeneID [54020](#)

Protein Accession# [P57057](#)

Gene Name SLC37A1

Gene Alias FLJ22340, G3PP

Gene Description solute carrier family 37 (glycerol-3-phosphate transporter), member 1

Omim ID [608094](#)

Gene Ontology [Hyperlink](#)

Gene Summary SLC37A1, a member of the sugar-phosphate transport family, transports glycerol-3-phosphate (G3P) between cellular compartments for its utilization in several compartment-specific biochemical pathways.[supplied by OMIM]

Other Designations OTTHUMP00000109360|OTTHUMP00000109362|glycerol-3-phosphate permease|solute carrier family 37 member 1