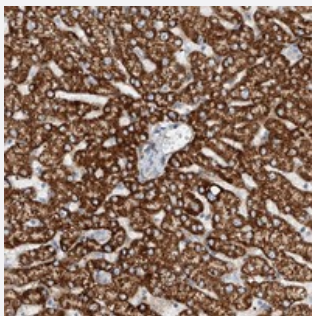


TAS2R60 polyclonal antibody

Catalog # PAB22444 Size 100 uL

Applications



Immunohistochemistry (Formalin/PFA-fixed paraffin-embedded sections)

Immunohistochemical staining of human liver with TAS2R60 polyclonal antibody (Cat # PAB22444) shows cytoplasmic positivity in hepatocytes at 1:50-1:200 dilution.

Specification

Product Description	Rabbit polyclonal antibody raised against recombinant TAS2R60.
Immunogen	Recombinant protein corresponding to amino acids of human TAS2R60.
Sequence	TSLGRHRKKALLTSGFREPSVQAHKA
Host	Rabbit
Reactivity	Human
Form	Liquid
Purification	Antigen affinity purification
Isotype	IgG
Recommend Usage	Immunohistochemistry (1:50-1:200) The optimal working dilution should be determined by the end user.
Storage Buffer	In PBS, pH 7.2 (40% glycerol, 0.02% sodium azide)
Storage Instruction	Store at 4°C. For long term storage store at -20°C. Aliquot to avoid repeated freezing and thawing.

Note

This product contains sodium azide: a POISONOUS AND HAZARDOUS SUBSTANCE which should be handled by trained staff only.

Applications

- Immunohistochemistry (Formalin/PFA-fixed paraffin-embedded sections)

Immunohistochemical staining of human liver with TAS2R60 polyclonal antibody (Cat # PAB22444) shows cytoplasmic positivity in hepatocytes at 1:50-1:200 dilution.

Gene Info — TAS2R60

Entrez GeneID	338398
---------------	------------------------

Protein Accession#	P59551
--------------------	------------------------

Gene Name	TAS2R60
-----------	---------

Gene Alias	MGC119154, MGC119155, T2R56, T2R60
------------	------------------------------------

Gene Description	taste receptor, type 2, member 60
------------------	-----------------------------------

Gene Ontology	Hyperlink
---------------	---------------------------

Gene Summary	type 2
--------------	--------

Other Designations	-
--------------------	---

Pathway

- [Taste transduction](#)