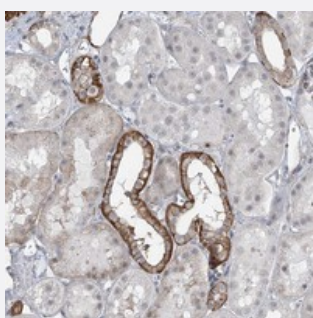


TXLNB polyclonal antibody

Catalog # PAB22443 Size 100 uL

Applications



Immunohistochemistry (Formalin/PFA-fixed paraffin-embedded sections)

Immunohistochemical staining of human kidney with TXLNB polyclonal antibody (Cat # PAB22443) shows strong cytoplasmic positivity in distal tubules at 1:500-1:1000 dilution.

Specification

Product Description	Rabbit polyclonal antibody raised against recombinant TXLNB.
Immunogen	Recombinant protein corresponding to amino acids of human TXLNB.
Sequence	ALQEERNELHKKIRD AEISEKDDQSQHNSDEEPESNVSDQEIDAE EVNSVQTAVKNLATAFMIIH HPESTPHQSKETQPEI
Host	Rabbit
Reactivity	Human
Form	Liquid
Purification	Antigen affinity purification
Isotype	IgG
Recommend Usage	Immunohistochemistry (1:500-1:1000) The optimal working dilution should be determined by the end user.
Storage Buffer	In PBS, pH 7.2 (40% glycerol, 0.02% sodium azide)

Storage Instruction

Store at 4°C. For long term storage store at -20°C.
Aliquot to avoid repeated freezing and thawing.

Note

This product contains sodium azide: a POISONOUS AND HAZARDOUS SUBSTANCE which should be handled by trained staff only.

Applications

- Immunohistochemistry (Formalin/PFA-fixed paraffin-embedded sections)

Immunohistochemical staining of human kidney with TXLNB polyclonal antibody (Cat # PAB22443) shows strong cytoplasmic positivity in distal tubules at 1:500-1:1000 dilution.

Gene Info — TXLNB

Entrez GeneID [167838](#)

Protein Accession# [Q8N3L3](#)

Gene Name TXLNB

Gene Alias C6orf198, DKFZp451A175, LST001, MDP77, dJ522B19.2

Gene Description taxilin beta

Omim ID [611438](#)

Gene Ontology [Hyperlink](#)

Other Designations beta-taxilin|muscle-derived protein 77

Disease

- [Tobacco Use Disorder](#)