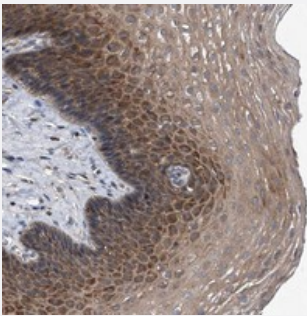


ZNF30 polyclonal antibody

Catalog # PAB22442 Size 100 uL

Applications



Immunohistochemistry (Formalin/PFA-fixed paraffin-embedded sections)

Immunohistochemical staining of human esophagus with ZNF30 polyclonal antibody (Cat # PAB22442) shows moderate cytoplasmic positivity in squamous epithelial cells.

Specification

Product Description	Rabbit polyclonal antibody raised against recombinant ZNF30.
Immunogen	Recombinant protein corresponding to amino acids of human ZNF30.
Sequence	KDLQLEDDTIGCKEMPTSENCPSFALHQKISRQKPRECQEYGKTLQCDSKPVQHERIHSSEKPNR CKECGK
Host	Rabbit
Reactivity	Human
Form	Liquid
Purification	Antigen affinity purification
Isotype	IgG
Recommend Usage	Immunohistochemistry (1:10-1:20) The optimal working dilution should be determined by the end user.
Storage Buffer	In PBS, pH 7.2 (40% glycerol, 0.02% sodium azide)

Storage Instruction

Store at 4°C. For long term storage store at -20°C.
Aliquot to avoid repeated freezing and thawing.

Note

This product contains sodium azide: a POISONOUS AND HAZARDOUS SUBSTANCE which should be handled by trained staff only.

Applications

- Immunohistochemistry (Formalin/PFA-fixed paraffin-embedded sections)

Immunohistochemical staining of human esophagus with ZNF30 polyclonal antibody (Cat # PAB22442) shows moderate cytoplasmic positivity in squamous epithelial cells.

Gene Info — ZNF30

Entrez GeneID[90075](#)**Protein Accession#**[P17039](#)**Gene Name**

ZNF30

Gene Alias

DKFZp686N19164, FLJ20562, KOX28

Gene Description

zinc finger protein 30

Gene Ontology[Hyperlink](#)**Other Designations**

zinc finger protein 30 (KOX 28)