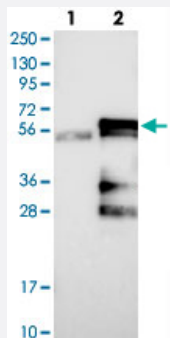


# KCMF1 polyclonal antibody

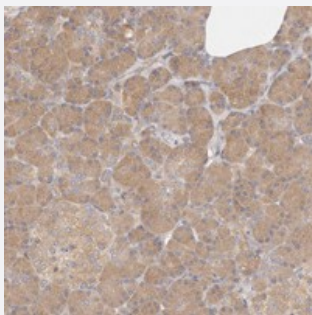
Catalog # PAB22440      Size 100 uL

## Applications



### Western Blot (Transfected lysate)

Western blot analysis of Lane 1: Negative control (vector only transfected HEK293T lysate), Lane 2: Over-expression Lysate (Co-expressed with a C-terminal myc-DDK tag (~3.1 kDa) in mammalian HEK293T cells) with KCMF1 polyclonal antibody (Cat # PAB22440) at 1:250-1:500 dilution.



### Immunohistochemistry (Formalin/PFA-fixed paraffin-embedded sections)

Immunohistochemical staining of human pancreas with KCMF1 polyclonal antibody (Cat # PAB22440) shows moderate cytoplasmic positivity in exocrine and endocrine cells at 1:200-1:500 dilution.

## Specification

<b>Product Description</b>	Rabbit polyclonal antibody raised against recombinant KCMF1.
<b>Immunogen</b>	Recombinant protein corresponding to amino acids of human KCMF1.
<b>Sequence</b>	LSGVRRSAGGQLNSSGPSASQLQQLQMQLQLERQHAQAARQQLETARNATRRNTSSVTTTITQ STATNIAANTESSQQLQNSQFLTRL
<b>Host</b>	Rabbit
<b>Reactivity</b>	Human
<b>Form</b>	Liquid

Purification	Antigen affinity purification
Isotype	IgG
Recommend Usage	Immunohistochemistry (1:200-1:500) Western Blot (1:250-1:500) The optimal working dilution should be determined by the end user.
Storage Buffer	In PBS, pH 7.2 (40% glycerol, 0.02% sodium azide)
Storage Instruction	Store at 4°C. For long term storage store at -20°C. Aliquot to avoid repeated freezing and thawing.
Note	This product contains sodium azide: a POISONOUS AND HAZARDOUS SUBSTANCE which should be handled by trained staff only.

## Applications

- Western Blot (Transfected lysate)

Western blot analysis of Lane 1: Negative control (vector only transfected HEK293T lysate), Lane 2: Over-expression Lysate (Co-expressed with a C-terminal myc-DDK tag (~3.1 kDa) in mammalian HEK293T cells) with KCMF1 polyclonal antibody (Cat # PAB22440) at 1:250-1:500 dilution.

- Immunohistochemistry (Formalin/PFA-fixed paraffin-embedded sections)

Immunohistochemical staining of human pancreas with KCMF1 polyclonal antibody (Cat # PAB22440) shows moderate cytoplasmic positivity in exocrine and endocrine cells at 1:200-1:500 dilution.

## Gene Info — KCMF1

Entrez GeneID	<a href="#">56888</a>
Protein Accession#	<a href="#">Q9P0J7</a>
Gene Name	KCMF1
Gene Alias	DEBT91, DKFZp434L1021, FIGC, PCMF, ZZZ1
Gene Description	potassium channel modulatory factor 1
Gene Ontology	<a href="#">Hyperlink</a>
Gene Summary	ZZ domain containing 1
Other Designations	FGF-induced ubiquitin-protein ligase in gastric cancers differentially expressed in branching tubulogenesis 91 zinc finger, ZZ domain containing 1