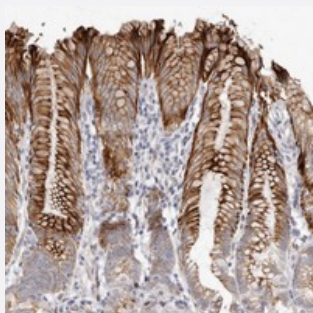


ZYG11A polyclonal antibody

Catalog # PAB22439 Size 100 uL

Applications



Immunohistochemistry (Formalin/PFA-fixed paraffin-embedded sections)

Immunohistochemical staining of human stomach with ZYG11A polyclonal antibody (Cat # PAB22439) shows strong cytoplasmic and membranous positivity in glandular cells at 1:50-1:200 dilution.

Specification

Product Description	Rabbit polyclonal antibody raised against recombinant ZYG11A.
Immunogen	Recombinant protein corresponding to amino acids of human ZYG11A.
Sequence	HADLPVPDIISGLCSNRWIQQNLQCLLLDSTSIPQNSRLLFFSQLTGLRILSVFNVCFHTELANVS QLPR
Host	Rabbit
Reactivity	Human
Form	Liquid
Purification	Antigen affinity purification
Isotype	IgG
Recommend Usage	Immunohistochemistry (1:50-1:200) The optimal working dilution should be determined by the end user.
Storage Buffer	In PBS, pH 7.2 (40% glycerol, 0.02% sodium azide)

Storage Instruction

Store at 4°C. For long term storage store at -20°C.
Aliquot to avoid repeated freezing and thawing.

Note

This product contains sodium azide: a POISONOUS AND HAZARDOUS SUBSTANCE which should be handled by trained staff only.

Applications

- Immunohistochemistry (Formalin/PFA-fixed paraffin-embedded sections)

Immunohistochemical staining of human stomach with ZYG11A polyclonal antibody (Cat # PAB22439) shows strong cytoplasmic and membranous positivity in glandular cells at 1:50-1:200 dilution.

Gene Info — ZYG11A

Entrez GeneID[440590](#)**Protein Accession#**[Q6WRX3](#)**Gene Name**

ZYG11A

Gene Alias

ZYG11

Gene Description

zyg-11 homolog A (C. elegans)

Gene Ontology[Hyperlink](#)**Other Designations**

OTTHUMP00000082753|ZYG-11A early embryogenesis protein|zyg-11 homolog A