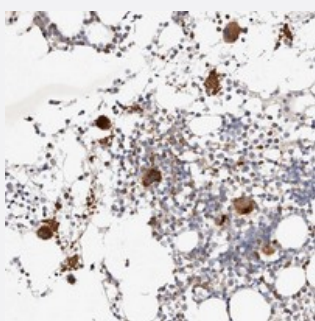


MTMR11 polyclonal antibody

Catalog # PAB22436 Size 100 uL

Applications



Immunohistochemistry (Formalin/PFA-fixed paraffin-embedded sections)

Immunohistochemical staining of human bone marrow with MTMR11 polyclonal antibody (Cat # PAB22436) shows strong cytoplasmic positivity in megakaryocytes.

Specification

Product Description	Rabbit polyclonal antibody raised against recombinant MTMR11.
Immunogen	Recombinant protein corresponding to amino acids of human MTMR11.
Sequence	FLLALHDSVRVPDTLTFLRNTPWERGKQSGQLNSYTQVYTPGYSQPPAGNSFNLQLSVWDWDLR YSNAQLQFQNPQYDPEHCPDSWLPRPQPSFMVPG
Host	Rabbit
Reactivity	Human
Form	Liquid
Purification	Antigen affinity purification
Isotype	IgG
Recommend Usage	Immunohistochemistry (1:20-1:50) The optimal working dilution should be determined by the end user.
Storage Buffer	In PBS, pH 7.2 (40% glycerol, 0.02% sodium azide)

Storage Instruction

Store at 4°C. For long term storage store at -20°C.
Aliquot to avoid repeated freezing and thawing.

Note

This product contains sodium azide: a POISONOUS AND HAZARDOUS SUBSTANCE which should be handled by trained staff only.

Applications

- Immunohistochemistry (Formalin/PFA-fixed paraffin-embedded sections)

Immunohistochemical staining of human bone marrow with MTMR11 polyclonal antibody (Cat # PAB22436) shows strong cytoplasmic positivity in megakaryocytes.

Gene Info — MTMR11

Entrez GeneID[10903](#)**Protein Accession#**[A4FU01](#)**Gene Name**

MTMR11

Gene Alias

CRA, RP11-212K13.1

Gene Description

myotubularin related protein 11

Gene Ontology[Hyperlink](#)**Other Designations**

cisplatin resistance associated