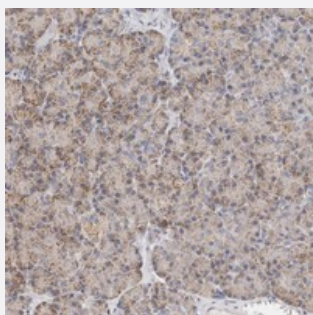


MLLT4 polyclonal antibody

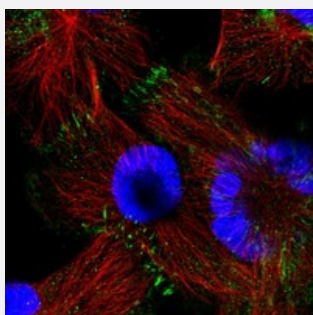
Catalog # PAB22419 Size 100 uL

Applications



Immunohistochemistry (Formalin/PFA-fixed paraffin-embedded sections)

Immunohistochemical staining of human pancreas with MLLT4 polyclonal antibody (Cat # PAB22419) shows moderate granular positivity in exocrine cells.



Immunofluorescence

Immunofluorescent staining of human cell line U-251 MG with MLLT4 polyclonal antibody (Cat # PAB22419) at 1-4 ug/mL dilution shows positivity in cytoplasm and cell junctions.

Specification

Product Description	Rabbit polyclonal antibody raised against recombinant MLLT4.
Immunogen	Recombinant protein corresponding to amino acids of human MLLT4.
Sequence	EAWAEKQGLELAADCHLSRVQATTLLTMDKYAPDDIPNINSTCFKLNSLQLQALLQNYHCAPDEP FIPTDLIENVVTVAENTADE
Host	Rabbit
Reactivity	Human
Form	Liquid

Purification	Antigen affinity purification
Isotype	IgG
Recommend Usage	Immunohistochemistry (1:200-1:500) Immunofluorescence (1-4 ug/mL) The optimal working dilution should be determined by the end user.
Storage Buffer	In PBS, pH 7.2 (40% glycerol, 0.02% sodium azide)
Storage Instruction	Store at 4°C. For long term storage store at -20°C. Aliquot to avoid repeated freezing and thawing.
Note	This product contains sodium azide: a POISONOUS AND HAZARDOUS SUBSTANCE which should be handled by trained staff only.

Applications

- Immunohistochemistry (Formalin/PFA-fixed paraffin-embedded sections)

Immunohistochemical staining of human pancreas with MLLT4 polyclonal antibody (Cat # PAB22419) shows moderate granular positivity in exocrine cells.

- Immunofluorescence

Immunofluorescent staining of human cell line U-251 MG with MLLT4 polyclonal antibody (Cat # PAB22419) at 1-4 ug/mL dilution shows positivity in cytoplasm and cell junctions.

Gene Info — MLLT4

Entrez GeneID	4301
Protein Accession#	P55196
Gene Name	MLLT4
Gene Alias	AF-6, AF6, AFADIN, FLJ34371, RP3-431P23.3
Gene Description	myeloid/lymphoid or mixed-lineage leukemia (trithorax homolog, Drosophila); translocated to, 4
Omim ID	159559
Gene Ontology	Hyperlink
Gene Summary	AF6 is a Ras (see HRAS; MIM 190020) target that regulates cell-cell adhesions downstream of Ras activation. It is fused with MLL (MIM 159555) in leukemias caused by t(6;11) translocations (Taya et al., 1998 [PubMed 9722616]).[supplied by OMIM]

Other Designations

OTTHUMP00000017632|myeloid/lymphoid or mixed-lineage leukemia, translocated to, 4

Pathway

- [Adherens junction](#)
- [Leukocyte transendothelial migration](#)
- [Tight junction](#)

Disease

- [Tobacco Use Disorder](#)