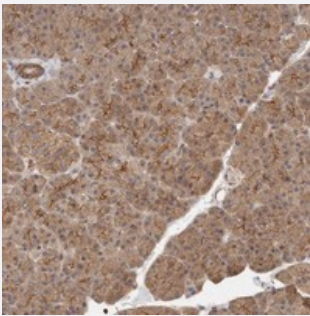


MLLT4 polyclonal antibody

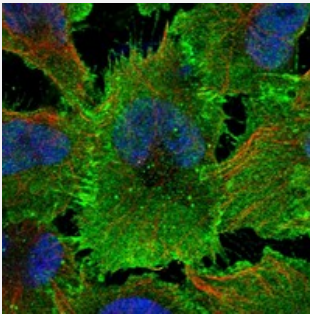
Catalog # PAB22418 Size 100 uL

Applications



Immunohistochemistry (Formalin/PFA-fixed paraffin-embedded sections)

Immunohistochemical staining of human pancreas with MLLT4 polyclonal antibody (Cat # PAB22418) shows moderate cytoplasmic and strong luminal membranous positivity in exocrine cells at 1:200-1:500 dilution.



Immunofluorescence

Immunofluorescent staining of human cell line U-251MG with MLLT4 polyclonal antibody (Cat # PAB22418) at 1-4 ug/mL dilution shows positivity in plasma membrane and cell junctions.

Specification

Product Description	Rabbit polyclonal antibody raised against recombinant MLLT4.
Immunogen	Recombinant protein corresponding to amino acids of human MLLT4.
Sequence	KPEKPSTLQRPQETVIRELQPQQQPRTIERRDLQYITVSKEELSSGDSLSPDPWKRDAKEKLEKQ QQMHVMDMLSKEIQELQSKPDRSAEESDRLRKLMLQWQ
Host	Rabbit
Reactivity	Human
Form	Liquid

Purification	Antigen affinity purification
Isotype	IgG
Recommend Usage	Immunohistochemistry (1:200-1:500) Immunofluorescence (1-4 ug/mL) The optimal working dilution should be determined by the end user.
Storage Buffer	In PBS, pH 7.2 (40% glycerol, 0.02% sodium azide)
Storage Instruction	Store at 4°C. For long term storage store at -20°C. Aliquot to avoid repeated freezing and thawing.
Note	This product contains sodium azide: a POISONOUS AND HAZARDOUS SUBSTANCE which should be handled by trained staff only.

Applications

- Immunohistochemistry (Formalin/PFA-fixed paraffin-embedded sections)

Immunohistochemical staining of human pancreas with MLLT4 polyclonal antibody (Cat # PAB22418) shows moderate cytoplasmic and strong luminal membranous positivity in exocrine cells at 1:200-1:500 dilution.

- Immunofluorescence

Immunofluorescent staining of human cell line U-251MG with MLLT4 polyclonal antibody (Cat # PAB22418) at 1-4 ug/mL dilution shows positivity in plasma membrane and cell junctions.

Gene Info — MLLT4

Entrez GeneID	4301
Protein Accession#	P55196
Gene Name	MLLT4
Gene Alias	AF-6, AF6, AFADIN, FLJ34371, RP3-431P23.3
Gene Description	myeloid/lymphoid or mixed-lineage leukemia (trithorax homolog, Drosophila); translocated to, 4
Omim ID	159559
Gene Ontology	Hyperlink
Gene Summary	AF6 is a Ras (see HRAS; MIM 190020) target that regulates cell-cell adhesions downstream of Ras activation. It is fused with MLL (MIM 159555) in leukemias caused by t(6;11) translocations (Tay et al., 1998 [PubMed 9722616]).[supplied by OMIM]

Other Designations

OTTHUMP00000017632|myeloid/lymphoid or mixed-lineage leukemia, translocated to, 4

Pathway

- [Adherens junction](#)
- [Leukocyte transendothelial migration](#)
- [Tight junction](#)

Disease

- [Tobacco Use Disorder](#)