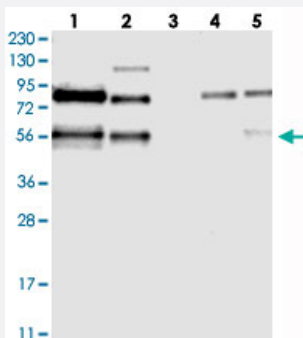


TJAP1 polyclonal antibody

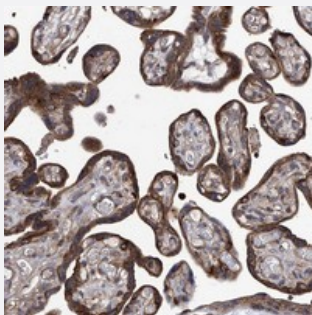
Catalog # PAB22406 Size 100 uL

Applications



Western Blot

Western blot analysis of Lane 1: RT-4, Lane 2: U-251 MG, Lane 3: Human Plasma, Lane 4: Liver, Lane 5: Tonsil with TJAP1 polyclonal antibody (Cat # PAB22406).



Immunohistochemistry (Formalin/PFA-fixed paraffin-embedded sections)

Immunohistochemical staining of human placenta with TJAP1 polyclonal antibody (Cat # PAB22406) shows strong granular cytoplasmic positivity in trophoblastic cells.

Specification

Product Description	Rabbit polyclonal antibody raised against recombinant TJAP1.
Immunogen	Recombinant protein corresponding to amino acids of human TJAP1.
Sequence	GSPEEELPLPAFEKLNYPYTPSPPHPLYPGRRVIEFSEDKVRIPRNSPLPNCTYATRQAISLSLVEE GSERARSPVPSTPASAQASPHHQPSAPLTLTAP
Host	Rabbit
Reactivity	Human, Mouse, Rat
Form	Liquid

Purification	Antigen affinity purification
Isotype	IgG
Recommend Usage	Immunohistochemistry (1:200-1:500) Western Blot (1:250-1:500) The optimal working dilution should be determined by the end user.
Storage Buffer	In PBS, pH 7.2 (40% glycerol, 0.02% sodium azide)
Storage Instruction	Store at 4°C. For long term storage store at -20°C. Aliquot to avoid repeated freezing and thawing.
Note	This product contains sodium azide: a POISONOUS AND HAZARDOUS SUBSTANCE which should be handled by trained staff only.

Applications

- Western Blot

Western blot analysis of Lane 1: RT-4, Lane 2: U-251 MG, Lane 3: Human Plasma, Lane 4: Liver, Lane 5: Tonsil with TJAP1 polyclonal antibody (Cat # PAB22406).

- Immunohistochemistry (Formalin/PFA-fixed paraffin-embedded sections)

Immunohistochemical staining of human placenta with TJAP1 polyclonal antibody (Cat # PAB22406) shows strong granular cytoplasmic positivity in trophoblastic cells.

Gene Info — TJAP1

Entrez GeneID	93643
Protein Accession#	Q5JTD0
Gene Name	TJAP1
Gene Alias	DKFZp686F06131, PILT, TJP4
Gene Description	tight junction associated protein 1 (peripheral)
Gene Ontology	Hyperlink
Gene Summary	This gene encodes a tight junction-associated protein. Incorporation of the encoded protein into tight junctions occurs at a late stage of formation of the junctions. The encoded protein localizes to the Golgi and may function in vesicle trafficking. Alternatively spliced transcript variants have been described. A related pseudogene exists on the X chromosome. [provided by RefSeq]

Other Designations

OTTHUMP00000016453|OTTHUMP00000016454|OTTHUMP00000016455|OTTHUMP00000016458|OTTHUMP00000039822|protein incorporated later into tight junctions|tight junction protein 4 (peripheral)

Pathway

- [Tight junction](#)