

LTV1 polyclonal antibody

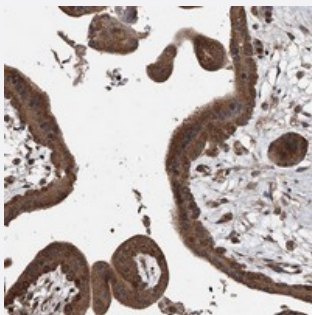
Catalog # PAB22404 Size 100 uL

Applications



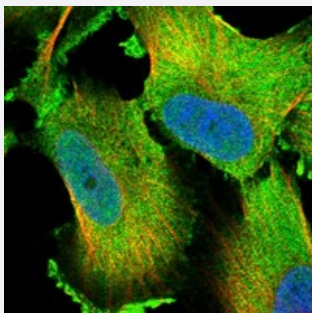
Western Blot

Western blot analysis of Lane 1: RT-4, Lane 2: U-251 MG, Lane 3: Human Plasma, Lane 4: Liver, Lane 5: Tonsil with LTV1 polyclonal antibody (Cat # PAB22404) at 1:250-1:500 dilution.



Immunohistochemistry (Formalin/PFA-fixed paraffin-embedded sections)

Immunohistochemical staining of human placenta with LTV1 polyclonal antibody (Cat # PAB22404) shows strong cytoplasmic positivity in trophoblastic cells at 1:200-1:500 dilution.



Immunofluorescence

Immunofluorescent staining of human cell line U-251MG with LTV1 polyclonal antibody (Cat # PAB22404) at 1-4 ug/mL dilution shows positivity in nucleus but not nucleoli and cytoplasm.

Specification

Product Description

Rabbit polyclonal antibody raised against recombinant LTV1.

Immunogen

Recombinant protein corresponding to amino acids of human LTV1.

Sequence	LEGSIQVDSNRLQEV LNDYYKEKAENCVKLNTLEPLEDQDLPMNELDESEEEEEMITVVLEEAKEK WDCESICSTYSNLYNHPQLIKYQPKPKQ
Host	Rabbit
Reactivity	Human
Form	Liquid
Purification	Antigen affinity purification
Isotype	IgG
Recommend Usage	Immunohistochemistry (1:200-1:500) Western Blot (1:250-1:500) Immunofluorescence (1-4 ug/mL) The optimal working dilution should be determined by the end user.
Storage Buffer	In PBS, pH 7.2 (40% glycerol, 0.02% sodium azide)
Storage Instruction	Store at 4°C. For long term storage store at -20°C. Aliquot to avoid repeated freezing and thawing.
Note	This product contains sodium azide: a POISONOUS AND HAZARDOUS SUBSTANCE which should be handled by trained staff only.

Applications

- Western Blot

Western blot analysis of Lane 1: RT-4, Lane 2: U-251 MG, Lane 3: Human Plasma, Lane 4: Liver, Lane 5: Tonsil with LTV1 polyclonal antibody (Cat # PAB22404) at 1:250-1:500 dilution.

- Immunohistochemistry (Formalin/PFA-fixed paraffin-embedded sections)

Immunohistochemical staining of human placenta with LTV1 polyclonal antibody (Cat # PAB22404) shows strong cytoplasmic positivity in trophoblastic cells at 1:200-1:500 dilution.

- Immunofluorescence

Immunofluorescent staining of human cell line U-251MG with LTV1 polyclonal antibody (Cat # PAB22404) at 1-4 ug/mL dilution shows positivity in nucleus but not nucleoli and cytoplasm.

Gene Info — LTV1

Entrez GeneID [84946](#)

Protein Accession# [Q96GA3](#)

Gene Name	LTV1
Gene Alias	C6orf93, FLJ14909, dJ468K18.4
Gene Description	LTV1 homolog (S. cerevisiae)
Gene Ontology	Hyperlink
Other Designations	LTV1 homolog OTTHUMP00000017340