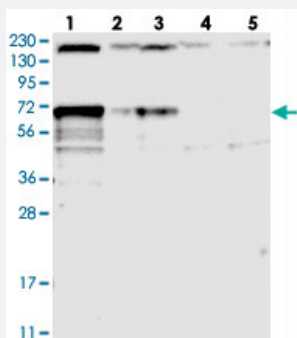


LTV1 polyclonal antibody

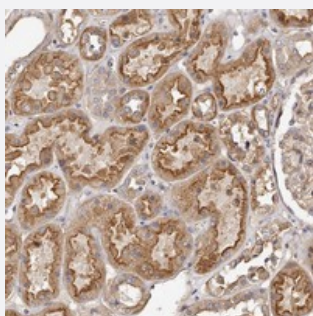
Catalog # PAB22403 Size 100 uL

Applications



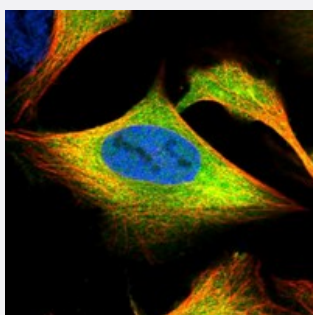
Western Blot

Western blot analysis of Lane 1: RT-4, Lane 2: U-251 MG, Lane 3: Human Plasma, Lane 4: Liver, Lane 5: Tonsil with LTV1 polyclonal antibody (Cat # PAB22403) at 1:250-1:500 dilution.



Immunohistochemistry (Formalin/PFA-fixed paraffin-embedded sections)

Immunohistochemical staining of human kidney with LTV1 polyclonal antibody (Cat # PAB22403) shows moderate cytoplasmic and membranous positivity in cells in tubules at 1:500-1:1000 dilution.



Immunofluorescence

Immunofluorescent staining of human cell line U-2 OS with LTV1 polyclonal antibody (Cat # PAB22403) at 1-4 ug/mL dilution shows positivity in cytoplasm.

Specification

Product Description

Rabbit polyclonal antibody raised against recombinant LTV1.

Immunogen

Recombinant protein corresponding to amino acids of human LTV1.

Sequence	ATGEEEGMDIQKSENEDDSEWEDVDDEKGDSNDDYDSAGLLSDEDCMSVPGKTHRAIADHLF WSEETKSRFTEYSM
Host	Rabbit
Reactivity	Human
Form	Liquid
Purification	Antigen affinity purification
Isotype	IgG
Recommend Usage	Immunohistochemistry (1:500-1:1000) Western Blot (1:250-1:500) Immunofluorescence (1-4 ug/mL) The optimal working dilution should be determined by the end user.
Storage Buffer	In PBS, pH 7.2 (40% glycerol, 0.02% sodium azide)
Storage Instruction	Store at 4°C. For long term storage store at -20°C. Aliquot to avoid repeated freezing and thawing.
Note	This product contains sodium azide: a POISONOUS AND HAZARDOUS SUBSTANCE which should be handled by trained staff only.

Applications

- Western Blot

Western blot analysis of Lane 1: RT-4, Lane 2: U-251 MG, Lane 3: Human Plasma, Lane 4: Liver, Lane 5: Tonsil with LTV1 polyclonal antibody (Cat # PAB22403) at 1:250-1:500 dilution.

- Immunohistochemistry (Formalin/PFA-fixed paraffin-embedded sections)

Immunohistochemical staining of human kidney with LTV1 polyclonal antibody (Cat # PAB22403) shows moderate cytoplasmic and membranous positivity in cells in tubules at 1:500-1:1000 dilution.

- Immunofluorescence

Immunofluorescent staining of human cell line U-2 OS with LTV1 polyclonal antibody (Cat # PAB22403) at 1-4 ug/mL dilution shows positivity in cytoplasm.

Gene Info — LTV1

Entrez GeneID [84946](#)

Protein Accession# [Q96GA3](#)

Gene Name	LTV1
Gene Alias	C6orf93, FLJ14909, dJ468K18.4
Gene Description	LTV1 homolog (S. cerevisiae)
Gene Ontology	Hyperlink
Other Designations	LTV1 homolog OTTHUMP00000017340