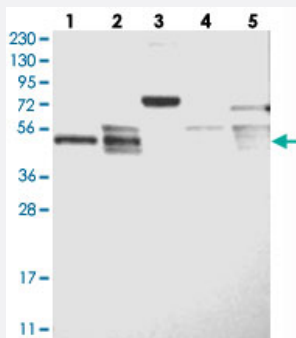


LACE1 polyclonal antibody

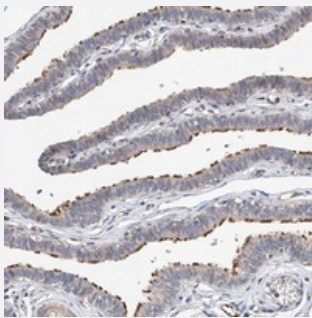
Catalog # PAB22401 Size 100 uL

Applications



Western Blot

Western blot analysis of Lane 1: RT-4, Lane 2: U-251 MG, Lane 3: Human Plasma, Lane 4: Liver, Lane 5: Tonsil with LACE1 polyclonal antibody (Cat # PAB22401).



Immunohistochemistry (Formalin/PFA-fixed paraffin-embedded sections)

Immunohistochemical staining of human fallopian tube with LACE1 polyclonal antibody (Cat # PAB22401) shows strong positivity in ciliated cells.

Specification

Product Description	Rabbit polyclonal antibody raised against recombinant LACE1.
Immunogen	Recombinant protein corresponding to amino acids of human LACE1.
Sequence	NGLQRANFVPFIAVLKEYCNTVQLDSGIDYRKRELPAAGKLYLTSEADVEAVMDKLFDELAQKQNDLT
Host	Rabbit
Reactivity	Human, Mouse
Form	Liquid

Purification	Antigen affinity purification
Isotype	IgG
Recommend Usage	Immunohistochemistry (1:50-1:200) Western Blot (1:250-1:500) The optimal working dilution should be determined by the end user.
Storage Buffer	In PBS, pH 7.2 (40% glycerol, 0.02% sodium azide)
Storage Instruction	Store at 4°C. For long term storage store at -20°C. Aliquot to avoid repeated freezing and thawing.
Note	This product contains sodium azide: a POISONOUS AND HAZARDOUS SUBSTANCE which should be handled by trained staff only.

Applications

- Western Blot

Western blot analysis of Lane 1: RT-4, Lane 2: U-251 MG, Lane 3: Human Plasma, Lane 4: Liver, Lane 5: Tonsil with LACE1 polyclonal antibody (Cat # PAB22401).

- Immunohistochemistry (Formalin/PFA-fixed paraffin-embedded sections)

Immunohistochemical staining of human fallopian tube with LACE1 polyclonal antibody (Cat # PAB22401) shows strong positivity in ciliated cells.

Gene Info — LACE1

Entrez GeneID	246269
Protein Accession#	Q8WV93
Gene Name	LACE1
Gene Alias	AFG1
Gene Description	lactation elevated 1
Gene Ontology	Hyperlink
Gene Summary	This gene encodes a protein with possible ATPase function. The protein contains a P-loop motif and a five-domain structure that is conserved in fly, yeast, and bacteria. Two conserved estrogen receptor binding sites are located within 2.5 kb of this gene. [provided by RefSeq]
Other Designations	ATPase family gene 1 homolog CG8520 gene product OTTHUMP00000016943

Disease

- [Cardiovascular Diseases](#)
- [Diabetes Mellitus](#)
- [Edema](#)
- [Lactose Intolerance](#)
- [Tobacco Use Disorder](#)