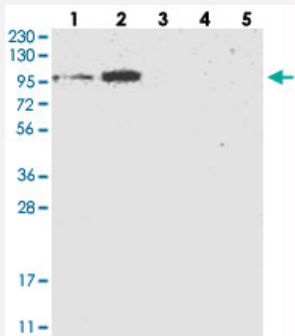


FLJ22374 polyclonal antibody

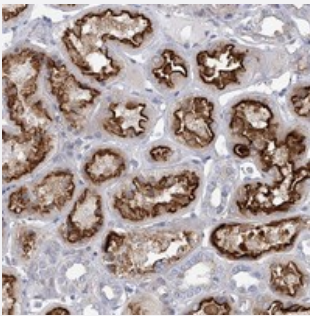
Catalog # PAB22397 Size 100 uL

Applications



Western Blot

Western blot analysis of Lane 1: RT-4, Lane 2: U-251 MG, Lane 3: Human Plasma, Lane 4: Liver, Lane 5: Tonsil with FLJ22374 polyclonal antibody (Cat # PAB22397).



Immunohistochemistry (Formalin/PFA-fixed paraffin-embedded sections)

Immunohistochemical staining of human kidney with FLJ22374 polyclonal antibody (Cat # PAB22397) shows strong luminal membrane and additional cytoplasmic positivity in renal tubules.

Specification

Product Description	Rabbit polyclonal antibody raised against recombinant FLJ22374.
Immunogen	Recombinant protein corresponding to amino acids of human FLJ22374.
Sequence	LKTPRFPIWVVCSESHFSILFSLQPGLLRDWRTERLFDLYYYDGLANQQEQIRLTIDTTQTISEDND DLVPPLELCIRTKWK GASVNWNGSD
Host	Rabbit
Reactivity	Human
Form	Liquid

Purification	Antigen affinity purification
Isotype	IgG
Recommend Usage	Immunohistochemistry (1:20-1:50) Western Blot (1:250-1:500) The optimal working dilution should be determined by the end user.
Storage Buffer	In PBS, pH 7.2 (40% glycerol, 0.02% sodium azide)
Storage Instruction	Store at 4°C. For long term storage store at -20°C. Aliquot to avoid repeated freezing and thawing.
Note	This product contains sodium azide: a POISONOUS AND HAZARDOUS SUBSTANCE which should be handled by trained staff only.

Applications

- Western Blot

Western blot analysis of Lane 1: RT-4, Lane 2: U-251 MG, Lane 3: Human Plasma, Lane 4: Liver, Lane 5: Tonsil with FLJ22374 polyclonal antibody (Cat # PAB22397).

- Immunohistochemistry (Formalin/PFA-fixed paraffin-embedded sections)

Immunohistochemical staining of human kidney with FLJ22374 polyclonal antibody (Cat # PAB22397) shows strong luminal membrane and additional cytoplasmic positivity in renal tubules.

Gene Info — FLJ22374

Entrez GeneID	84182
Protein Accession#	Q4G0A6
Gene Name	FLJ22374
Gene Alias	MGC44277
Gene Description	hypothetical protein FLJ22374
Gene Ontology	Hyperlink
Other Designations	hypothetical protein LOC84182

Disease

- [Cardiovascular Diseases](#)
- [Diabetes Mellitus](#)
- [Edema](#)