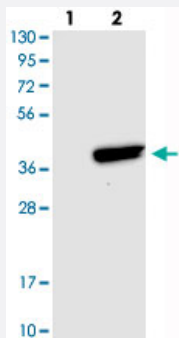


RWDD2A polyclonal antibody

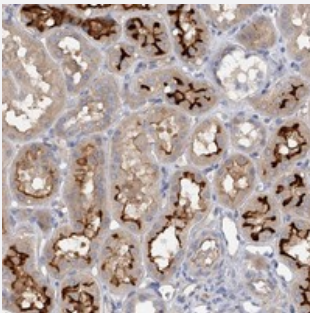
Catalog # PAB22393 Size 100 uL

Applications



Western Blot (Transfected lysate)

Western blot analysis of Lane 1: Negative control (vector only transfected HEK293T lysate), Lane 2: Over-expression Lysate (Co-expressed with a C-terminal myc-DDK tag (~3.1 kDa) in mammalian HEK293T cells) with RWDD2A polyclonal antibody (Cat # PAB22393).



Immunohistochemistry (Formalin/PFA-fixed paraffin-embedded sections)

Immunohistochemical staining of human kidney with RWDD2A polyclonal antibody (Cat # PAB22393) shows strong luminal membrane positivity in cells in tubules.

Specification

Product Description	Rabbit polyclonal antibody raised against recombinant RWDD2A.
Immunogen	Recombinant protein corresponding to amino acids of human RWDD2A.
Sequence	SASVKESLQLQLLEMEMLFMSFPNQGEVKLEDVNALTNIKRYLEGREALPPKIEFVITLQIEEPKV KIDLQVTMPHSYPYVALQLFGRSSELDHRHQ
Host	Rabbit
Reactivity	Human
Form	Liquid

Purification	Antigen affinity purification
Isotype	IgG
Recommend Usage	Immunohistochemistry (1:50-1:200) Western Blot (1:250-1:500) The optimal working dilution should be determined by the end user.
Storage Buffer	In PBS, pH 7.2 (40% glycerol, 0.02% sodium azide)
Storage Instruction	Store at 4°C. For long term storage store at -20°C. Aliquot to avoid repeated freezing and thawing.
Note	This product contains sodium azide: a POISONOUS AND HAZARDOUS SUBSTANCE which should be handled by trained staff only.

Applications

- Western Blot (Transfected lysate)

Western blot analysis of Lane 1: Negative control (vector only transfected HEK293T lysate), Lane 2: Over-expression Lysate (Co-expressed with a C-terminal myc-DDK tag (~3.1 kDa) in mammalian HEK293T cells) with RWDD2A polyclonal antibody (Cat # PAB22393).

- Immunohistochemistry (Formalin/PFA-fixed paraffin-embedded sections)

Immunohistochemical staining of human kidney with RWDD2A polyclonal antibody (Cat # PAB22393) shows strong luminal membrane positivity in cells in tubules.

Gene Info — RWDD2A

Entrez GeneID	112611
Protein Accession#	Q9UIY3
Gene Name	RWDD2A
Gene Alias	MGC13523, MGC138208, RWDD2, dJ747H23.2
Gene Description	RWD domain containing 2A
Gene Ontology	Hyperlink
Other Designations	OTTHUMP00000016790 OTTHUMP00000040569 RWD domain containing 2