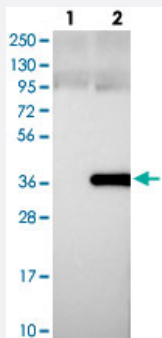


RWDD2A polyclonal antibody

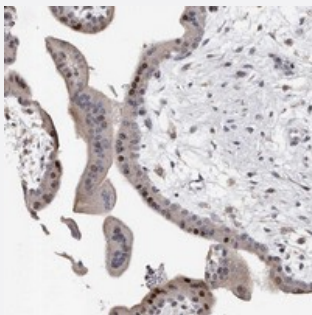
Catalog # PAB22392 Size 100 uL

Applications



Western Blot (Transfected lysate)

Western blot analysis of Lane 1: Negative control (vector only transfected HEK293T lysate), Lane 2: Over-expression Lysate (Co-expressed with a C-terminal myc-DDK tag (~3.1 kDa) in mammalian HEK293T cells) with RWDD2A polyclonal antibody (Cat # PAB22392) at 1:250-1:500 dilution.



Immunohistochemistry (Formalin/PFA-fixed paraffin-embedded sections)

Immunohistochemical staining of human placenta with RWDD2A polyclonal antibody (Cat # PAB22392) shows strong nuclear positivity in trophoblastic cells at 1:200-1:500 dilution.

Specification

Product Description	Rabbit polyclonal antibody raised against recombinant RWDD2A.
Immunogen	Recombinant protein corresponding to amino acids of human RWDD2A.
Sequence	IIICVEGFKEHCEEFWHTIRYPNWKHISCKHAESVETEGNGEDLRLFHSFEELLLEAHGDYGLRNDY HMNLGQFLEFLKKHKSEHVFQILFGIESKSSDS
Host	Rabbit
Reactivity	Human
Form	Liquid

Purification	Antigen affinity purification
Isotype	IgG
Recommend Usage	Immunohistochemistry (1:200-1:500) Western Blot (1:250-1:500) The optimal working dilution should be determined by the end user.
Storage Buffer	In PBS, pH 7.2 (40% glycerol, 0.02% sodium azide)
Storage Instruction	Store at 4°C. For long term storage store at -20°C. Aliquot to avoid repeated freezing and thawing.
Note	This product contains sodium azide: a POISONOUS AND HAZARDOUS SUBSTANCE which should be handled by trained staff only.

Applications

- Western Blot (Transfected lysate)

Western blot analysis of Lane 1: Negative control (vector only transfected HEK293T lysate), Lane 2: Over-expression Lysate (Co-expressed with a C-terminal myc-DDK tag (~3.1 kDa) in mammalian HEK293T cells) with RWDD2A polyclonal antibody (Cat # PAB22392) at 1:250-1:500 dilution.

- Immunohistochemistry (Formalin/PFA-fixed paraffin-embedded sections)

Immunohistochemical staining of human placenta with RWDD2A polyclonal antibody (Cat # PAB22392) shows strong nuclear positivity in trophoblastic cells at 1:200-1:500 dilution.

Gene Info — RWDD2A

Entrez GeneID	112611
Protein Accession#	Q9UIY3
Gene Name	RWDD2A
Gene Alias	MGC13523, MGC138208, RWDD2, dJ747H23.2
Gene Description	RWD domain containing 2A
Gene Ontology	Hyperlink
Other Designations	OTTHUMP00000016790 OTTHUMP00000040569 RWD domain containing 2