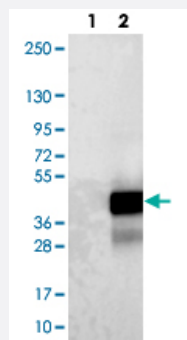


LURAP1 polyclonal antibody

Catalog # PAB22378 Size 100 uL

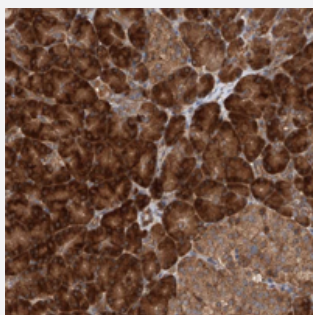
Applications



Western Blot (Transfected lysate)

Western blot analysis of Lane 1: Negative control (vector only transfected HEK293T lysate).

Lane 2: Over-expression lysate (Co-expressed with a C-terminal myc-DDK tag (~3.1 kDa) in mammalian HEK293T cells with LURAP1 polyclonal antibody (Cat # PAB22378).



Immunohistochemistry (Formalin/PFA-fixed paraffin-embedded sections)

Immunohistochemical staining of human prostate with LURAP1 polyclonal antibody (Cat # PAB22378) shows moderate cytoplasmic and membranous positivity in glandular cells at 1:50-1:200 dilution.

Specification

Product Description	Rabbit polyclonal antibody raised against recombinant LURAP1.
Immunogen	Recombinant protein corresponding to amino acids of human LURAP1.
Sequence	GTVESQTPDLRDVEGKVGRKTPEGLLRGLRGECELTSGALLLPASSTGHDLGDKIMALKMEL AYLRAIDVKILQQLVTLNE
Host	Rabbit
Reactivity	Human
Form	Liquid

Purification	Antigen affinity purification
Isotype	IgG
Recommend Usage	Immunohistochemistry (1:50-1:200) The optimal working dilution should be determined by the end user.
Storage Buffer	In PBS, pH 7.2 (40% glycerol, 0.02% sodium azide)
Storage Instruction	Store at 4°C. For long term storage store at -20°C. Aliquot to avoid repeated freezing and thawing.
Note	This product contains sodium azide: a POISONOUS AND HAZARDOUS SUBSTANCE which should be handled by trained staff only.

Applications

- Western Blot (Transfected lysate)

Western blot analysis of Lane 1: Negative control (vector only transfected HEK293T lysate).

Lane 2: Over-expression lysate (Co-expressed with a C-terminal myc-DDK tag (~3.1 kDa) in mammalian HEK293T cells with LURAP1 polyclonal antibody (Cat # PAB22378).

- Immunohistochemistry (Formalin/PFA-fixed paraffin-embedded sections)

Immunohistochemical staining of human prostate with LURAP1 polyclonal antibody (Cat # PAB22378) shows moderate cytoplasmic and membranous positivity in glandular cells at 1:50-1:200 dilution.

Gene Info — LURAP1

Entrez GeneID	541468
Protein Accession#	Q96LR2
Gene Name	LURAP1
Gene Alias	C1orf190, LRAP35a, LRP35A
Gene Description	leucine rich adaptor protein 1
Gene Ontology	Hyperlink
Other Designations	NF-kappa-B activator C1orf190; leucine repeat adapter protein 35A; leucine repeat adaptor protein 35a