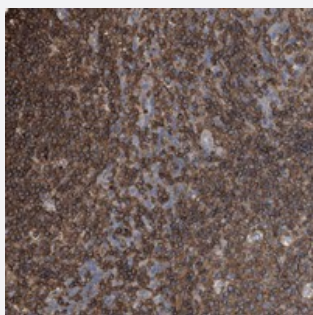


RSPO3 polyclonal antibody

Catalog # PAB22374 Size 100 uL

Applications



Immunohistochemistry (Formalin/PFA-fixed paraffin-embedded sections)

Immunohistochemical staining of human tonsil with RSPO3 polyclonal antibody (Cat # PAB22374) shows strong cytoplasmic positivity in lymphoid cells outside reaction centra at 1:200-1:500 dilution.

Specification

Product Description	Rabbit polyclonal antibody raised against recombinant RSPO3.
Immunogen	Recombinant protein corresponding to amino acids of human RSPO3.
Sequence	PTNETRKCTVQRKKCQKGERGKKGRERKRKKPNKGESKEAIPDSKSLESSKEIQRENKQQQ KKRKVQDKQKSVSVS
Host	Rabbit
Reactivity	Human
Form	Liquid
Purification	Antigen affinity purification
Isotype	IgG
Recommend Usage	Immunohistochemistry (1:200-1:500) The optimal working dilution should be determined by the end user.
Storage Buffer	In PBS, pH 7.2 (40% glycerol, 0.02% sodium azide)

Storage Instruction

Store at 4°C. For long term storage store at -20°C.
Aliquot to avoid repeated freezing and thawing.

Note

This product contains sodium azide: a POISONOUS AND HAZARDOUS SUBSTANCE which should be handled by trained staff only.

Applications

- Immunohistochemistry (Formalin/PFA-fixed paraffin-embedded sections)

Immunohistochemical staining of human tonsil with RSPO3 polyclonal antibody (Cat # PAB22374) shows strong cytoplasmic positivity in lymphoid cells outside reaction centra at 1:200-1:500 dilution.

Gene Info — RSPO3

Entrez GeneID [84870](#)

Protein Accession# [Q9BXY4](#)

Gene Name RSPO3

Gene Alias CRISTIN1, FLJ14440, PWTSR, THSD2

Gene Description R-spondin 3 homolog (Xenopus laevis)

Omim ID [610574](#)

Gene Ontology [Hyperlink](#)

Gene Summary This gene encodes a member of the thrombospondin type 1 repeat supergene family. In addition, the protein contains a furin-like cysteine-rich region. Furin-like repeat domains have been found in a variety of eukaryotic proteins involved in the mechanism of signal transduction by receptor tyrosine kinases. [provided by RefSeq]

Other Designations OTTHUMP00000017161|R-spondin 3|thrombospondin, type I, domain containing 2|thrombospondin-like

Disease

- [Cleft Lip](#)
- [Cleft Palate](#)
- [Tobacco Use Disorder](#)

- [Tooth Abnormalities](#)