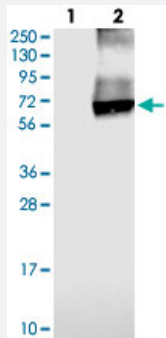


# SLC26A11 polyclonal antibody

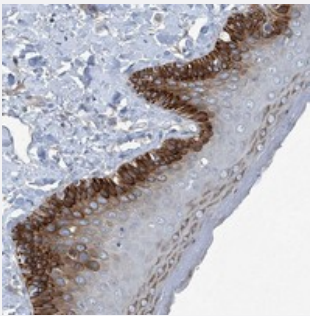
Catalog # PAB22367      Size 100 uL

## Applications



### Western Blot (Transfected lysate)

Western blot analysis of Lane 1: Negative control (vector only transfected HEK293T lysate), Lane 2: Over-expression Lysate (Co-expressed with a C-terminal myc-DDK tag (~3.1 kDa) in mammalian HEK293T cells) with SLC26A11 polyclonal antibody (Cat # PAB22367) at 1:250-1:500 dilution.



### Immunohistochemistry (Formalin/PFA-fixed paraffin-embedded sections)

Immunohistochemical staining of human vulva/anal skin with SLC26A11 polyclonal antibody (Cat # PAB22367) shows strong cytoplasmic positivity in basal cells at 1:50-1:200 dilution.

## Specification

Product Description	Rabbit polyclonal antibody raised against recombinant SLC26A11.
Immunogen	Recombinant protein corresponding to amino acids of human SLC26A11.
Sequence	SAARPETKVSEGPVLVLQPASGLSFPAMEALREEILSRALEVSPPRCLVLECTHVCSIDYTVVLGLGELL
Host	Rabbit
Reactivity	Human
Form	Liquid

Purification	Antigen affinity purification
Isotype	IgG
Recommend Usage	Immunohistochemistry (1:50-1:200) Western Blot (1:250-1:500) The optimal working dilution should be determined by the end user.
Storage Buffer	In PBS, pH 7.2 (40% glycerol, 0.02% sodium azide)
Storage Instruction	Store at 4°C. For long term storage store at -20°C. Aliquot to avoid repeated freezing and thawing.
Note	This product contains sodium azide: a POISONOUS AND HAZARDOUS SUBSTANCE which should be handled by trained staff only.

## Applications

- Western Blot (Transfected lysate)

Western blot analysis of Lane 1: Negative control (vector only transfected HEK293T lysate), Lane 2: Over-expression Lysate (Co-expressed with a C-terminal myc-DDK tag (~3.1 kDa) in mammalian HEK293T cells) with SLC26A11 polyclonal antibody (Cat # PAB22367) at 1:250-1:500 dilution.

- Immunohistochemistry (Formalin/PFA-fixed paraffin-embedded sections)

Immunohistochemical staining of human vulva/anal skin with SLC26A11 polyclonal antibody (Cat # PAB22367) shows strong cytoplasmic positivity in basal cells at 1:50-1:200 dilution.

## Gene Info — SLC26A11

Entrez GeneID	<a href="#">284129</a>
Protein Accession#	<a href="#">Q86WA9</a>
Gene Name	SLC26A11
Gene Alias	MGC46523
Gene Description	solute carrier family 26, member 11
Omim ID	<a href="#">610117</a>
Gene Ontology	<a href="#">Hyperlink</a>
Gene Summary	Like most members of the SLC26A family, SLC26A11 is a sodium-independent sulfate transporter (Vincourt et al., 2003 [PubMed 12626430]).[supplied by OMIM]

Other Designations

-