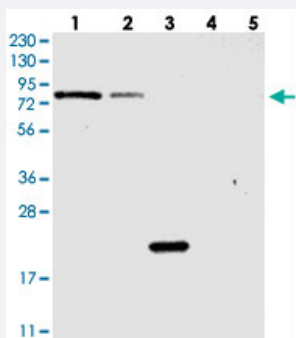


PGBD2 polyclonal antibody

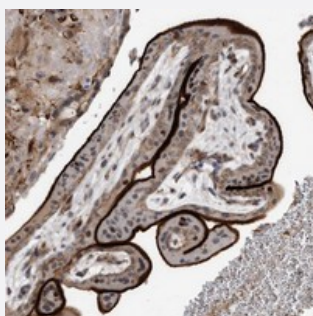
Catalog # PAB22365 Size 100 uL

Applications



Western Blot

Western blot analysis of Lane 1: RT-4, Lane 2: U-251 MG, Lane 3: Human Plasma, Lane 4: Liver, Lane 5: Tonsil with PGBD2 polyclonal antibody (Cat # PAB22365) at 1:250-1:500 dilution.



Immunohistochemistry (Formalin/PFA-fixed paraffin-embedded sections)

Immunohistochemical staining of human placenta with PGBD2 polyclonal antibody (Cat # PAB22365) showed strong membranous positivity in trophoblastic cells at 1:20-1:50 dilution.

Specification

Product Description	Rabbit polyclonal antibody raised against recombinant PGBD2.
Immunogen	Recombinant protein corresponding to amino acids of human PGBD2.
Sequence	PGSVLHASVLCEDSGTGEDNDDLELQPAKKRQKAVVKPQRIWTKRDIRPDFGSWTASDPHIEDLKSQELSPVGL
Host	Rabbit
Reactivity	Human
Form	Liquid

Purification	Antigen affinity purification
Isotype	IgG
Recommend Usage	Immunohistochemistry (1:20-1:50) Western Blot (1:250-1:500) The optimal working dilution should be determined by the end user.
Storage Buffer	In PBS, pH 7.2 (40% glycerol, 0.02% sodium azide)
Storage Instruction	Store at 4°C. For long term storage store at -20°C. Aliquot to avoid repeated freezing and thawing.
Note	This product contains sodium azide: a POISONOUS AND HAZARDOUS SUBSTANCE which should be handled by trained staff only.

Applications

- Western Blot

Western blot analysis of Lane 1: RT-4, Lane 2: U-251 MG, Lane 3: Human Plasma, Lane 4: Liver, Lane 5: Tonsil with PGBD2 polyclonal antibody (Cat # PAB22365) at 1:250-1:500 dilution.

- Immunohistochemistry (Formalin/PFA-fixed paraffin-embedded sections)

Immunohistochemical staining of human placenta with PGBD2 polyclonal antibody (Cat # PAB22365) showed strong membranous positivity in trophoblastic cells at 1:20-1:50 dilution.

Gene Info — PGBD2

Entrez GeneID	267002
Protein Accession#	Q6P3X8
Gene Name	PGBD2
Gene Alias	-
Gene Description	piggyBac transposable element derived 2
Gene Ontology	Hyperlink

Gene Summary

The piggyBac family of proteins, found in diverse animals, are transposases related to the transposase of the canonical piggyBac transposon from the moth, *Trichoplusia ni*. This family also includes genes in several genomes, including human, that appear to have been derived from the piggyBac transposons. This gene belongs to the subfamily of piggyBac transposable element derived (PGBD) genes. The PGBD proteins appear to be novel, with no obvious relationship to other transposases, or other known protein families. The exact function of this gene is not known. Two transcript variants encoding different isoforms have been found for this gene. [provided by RefSeq]

Other Designations

OTTHUMP00000038246|hypothetical protein LOC267002