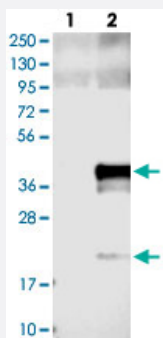


CLDND1 polyclonal antibody

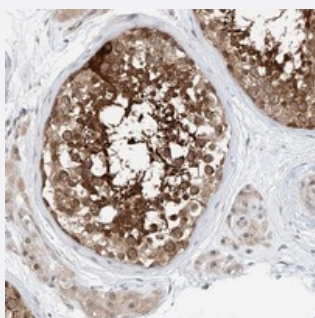
Catalog # PAB22357 Size 100 uL

Applications



Western Blot (Transfected lysate)

Western blot analysis of Lane 1: Negative control (vector only transfected HEK293T lysate), Lane 2: Over-expression Lysate (Co-expressed with a C-terminal myc-DDK tag (~3.1 kDa) in mammalian HEK293T cells) with CLDND1 polyclonal antibody (Cat # PAB22357) at 1:250-1:500 dilution.



Immunohistochemistry (Formalin/PFA-fixed paraffin-embedded sections)

Immunohistochemical staining of human testis with CLDND1 polyclonal antibody (Cat # PAB22357) shows strong nucleus and cytoplasmic positivity of cells in seminiferous ducts at 1:50-1:200 dilution.

Specification

Product Description	Rabbit polyclonal antibody raised against recombinant CLDND1.
Immunogen	Recombinant protein corresponding to amino acids of human CLDND1.
Sequence	NMHWYSPPERTESFDVVTCKVSFTLTEQFMEKFVDPGNHNSGIDLLRTYLWRC
Host	Rabbit
Reactivity	Human
Form	Liquid
Purification	Antigen affinity purification

Isotype	IgG
Recommend Usage	Immunohistochemistry (1:50-1:200) Western Blot (1:250-1:500) The optimal working dilution should be determined by the end user.
Storage Buffer	In PBS, pH 7.2 (40% glycerol, 0.02% sodium azide)
Storage Instruction	Store at 4°C. For long term storage store at -20°C. Aliquot to avoid repeated freezing and thawing.
Note	This product contains sodium azide: a POISONOUS AND HAZARDOUS SUBSTANCE which should be handled by trained staff only.

Applications

- Western Blot (Transfected lysate)

Western blot analysis of Lane 1: Negative control (vector only transfected HEK293T lysate), Lane 2: Over-expression Lysate (Co-expressed with a C-terminal myc-DDK tag (~3.1 kDa) in mammalian HEK293T cells) with CLDND1 polyclonal antibody (Cat # PAB22357) at 1:250-1:500 dilution.

- Immunohistochemistry (Formalin/PFA-fixed paraffin-embedded sections)

Immunohistochemical staining of human testis with CLDND1 polyclonal antibody (Cat # PAB22357) shows strong nucleus and cytoplasmic positivity of cells in seminiferous ducts at 1:50-1:200 dilution.

Gene Info — CLDND1

Entrez GeneID	56650
Protein Accession#	Q9NY35
Gene Name	CLDND1
Gene Alias	C3orf4, GENX-3745, MGC111162, MGC3316, MGC9861
Gene Description	claudin domain containing 1
Gene Ontology	Hyperlink
Other Designations	claudin domain containing 1 protein

Disease

- [Disease Progression](#)
- [Disease Susceptibility](#)
- [HIV Infections](#)