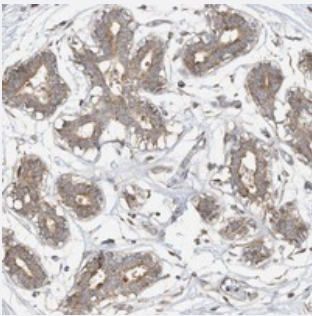


CAGE1 polyclonal antibody

Catalog # PAB22355 Size 100 uL

Applications



Immunohistochemistry (Formalin/PFA-fixed paraffin-embedded sections)

Immunohistochemical staining of human breast with CAGE1 polyclonal antibody (Cat # PAB22355) shows moderate cytoplasmic positivity in glandular cells.

Specification

Product Description	Rabbit polyclonal antibody raised against recombinant CAGE1.
Immunogen	Recombinant protein corresponding to amino acids of human CAGE1.
Sequence	DNNIENYSTNALIQPVDTISISSLRQFETVCKFHWVEAFDDEMTEKPEFQSQVYNYAKDNNIKQDSF KEENPMETSVSANTDQLGNEYF
Host	Rabbit
Reactivity	Human
Form	Liquid
Purification	Antigen affinity purification
Isotype	IgG
Recommend Usage	Immunohistochemistry (1:200-1:500) The optimal working dilution should be determined by the end user.
Storage Buffer	In PBS, pH 7.2 (40% glycerol, 0.02% sodium azide)

Storage Instruction

Store at 4°C. For long term storage store at -20°C.
Aliquot to avoid repeated freezing and thawing.

Note

This product contains sodium azide: a POISONOUS AND HAZARDOUS SUBSTANCE which should be handled by trained staff only.

Applications

- Immunohistochemistry (Formalin/PFA-fixed paraffin-embedded sections)

Immunohistochemical staining of human breast with CAGE1 polyclonal antibody (Cat # PAB22355) shows moderate cytoplasmic positivity in glandular cells.

Gene Info — CAGE1

Entrez GeneID[285782](#)**Protein Accession#**[Q8TC20](#)**Gene Name**

CAGE1

Gene Alias

CTAG3, FLJ40441, bA69L16.7

Gene Description

cancer antigen 1

Omim ID[608304](#)**Gene Ontology**[Hyperlink](#)**Other Designations**

cancer-associated gene 1|cancer/testis antigen 3|cancer/testis antigen gene 1