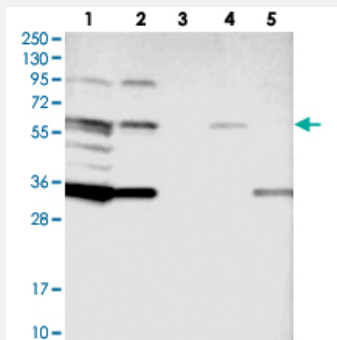


# TTI2 polyclonal antibody

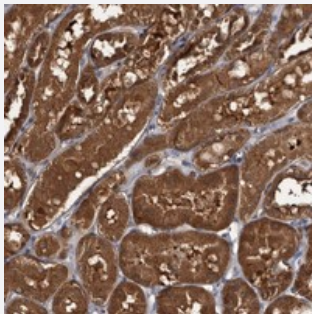
Catalog # PAB22351      Size 100 uL

## Applications



### Western Blot

Western blot analysis of Lane 1: RT-4, Lane 2: U-251 MG, Lane 3: human plasma, Lane 4: liver, Lane 5: tonsil with TTI2 polyclonal antibody (Cat # PAB22351) at 1:100-1:250 dilution.



### Immunohistochemistry (Formalin/PFA-fixed paraffin-embedded sections)

Immunohistochemical staining of human kidney with TTI2 polyclonal antibody (Cat # PAB22351) shows strong cytoplasmic positivity in tubular cells at 1:200-1:500 dilution.

## Specification

<b>Product Description</b>	Rabbit polyclonal antibody raised against recombinant TTI2.
<b>Immunogen</b>	Recombinant protein corresponding to amino acids of human TTI2.
<b>Sequence</b>	QEDSNLSEELSHSAFGQAQAFSKILHCLARPEARRGNVKGDAVLKDLGDLIEATGFDRLFEGTGARLR GMPETLGQVAKALEKY
<b>Host</b>	Rabbit
<b>Reactivity</b>	Human
<b>Form</b>	Liquid

Purification	Antigen affinity purification
Isotype	IgG
Recommend Usage	Immunohistochemistry (1:200-1:500) Western Blot (1:250-1:500) The optimal working dilution should be determined by the end user.
Storage Buffer	In PBS, pH 7.2 (40% glycerol, 0.02% sodium azide)
Storage Instruction	Store at 4°C. For long term storage store at -20°C. Aliquot to avoid repeated freezing and thawing.
Note	This product contains sodium azide: a POISONOUS AND HAZARDOUS SUBSTANCE which should be handled by trained staff only.

## Applications

- Western Blot

Western blot analysis of Lane 1: RT-4, Lane 2: U-251 MG, Lane 3: human plasma, Lane 4: liver, Lane 5: tonsil with TT12 polyclonal antibody (Cat # PAB22351) at 1:100-1:250 dilution.

- Immunohistochemistry (Formalin/PFA-fixed paraffin-embedded sections)

Immunohistochemical staining of human kidney with TT12 polyclonal antibody (Cat # PAB22351) shows strong cytoplasmic positivity in tubular cells at 1:200-1:500 dilution.

## Gene Info — TT12

Entrez GeneID	<a href="#">80185</a>
Protein Accession#	<a href="#">Q6NXR4</a>
Gene Name	TT12
Gene Alias	C8orf41
Gene Description	TELO2 interacting protein 2
Gene Ontology	<a href="#">Hyperlink</a>
Other Designations	TELO2-interacting protein 2; Tel2 interacting protein 2 homolog