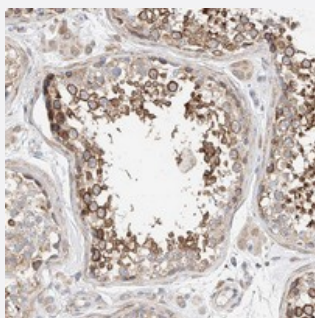


C6orf118 polyclonal antibody

Catalog # PAB22341

Size 100 uL

Applications



Immunohistochemistry (Formalin/PFA-fixed paraffin-embedded sections)

Immunohistochemical staining of human testis with C6orf118 polyclonal antibody (Cat # PAB22341) shows strong cytoplasmic positivity in subsets of seminiferous duct cells at 1:50-1:200 dilution.

Specification

Product Description	Rabbit polyclonal antibody raised against recombinant C6orf118.
Immunogen	Recombinant protein corresponding to amino acids of human C6orf118.
Sequence	CNSSLIFGDLLKKVKDEYELMATLLESQPAAQYEALLAQLKALGQRPVKTADMDLAREELRMLV TATKAAL
Host	Rabbit
Reactivity	Human
Form	Liquid
Purification	Antigen affinity purification
Isotype	IgG
Recommend Usage	Immunohistochemistry (1:50-1:200) The optimal working dilution should be determined by the end user.
Storage Buffer	In PBS, pH 7.2 (40% glycerol, 0.02% sodium azide)

Storage Instruction

Store at 4°C. For long term storage store at -20°C.
Aliquot to avoid repeated freezing and thawing.

Note

This product contains sodium azide: a POISONOUS AND HAZARDOUS SUBSTANCE which should be handled by trained staff only.

Applications

- Immunohistochemistry (Formalin/PFA-fixed paraffin-embedded sections)

Immunohistochemical staining of human testis with C6orf118 polyclonal antibody (Cat # PAB22341) shows strong cytoplasmic positivity in subsets of seminiferous duct cells at 1:50-1:200 dilution.

Gene Info — C6orf118

Entrez GeneID[168090](#)**Protein Accession#**[Q5T5N4](#)**Gene Name**

C6orf118

Gene Alias

MGC23884, bA85G2.1, dJ416F21.2

Gene Description

chromosome 6 open reading frame 118

Gene Ontology[Hyperlink](#)**Other Designations**

OTTHUMP00000017584|dJ416F21.2 (novel protein)|hypothetical protein LOC168090