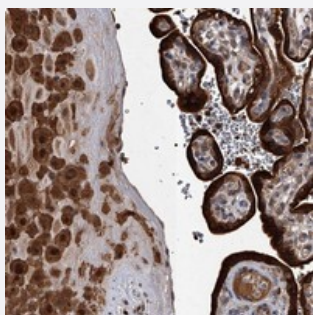


SLC18B1 polyclonal antibody

Catalog # PAB22336 Size 100 uL

Applications



Immunohistochemistry (Formalin/PFA-fixed paraffin-embedded sections)

Immunohistochemical staining of human placenta with SLC18B1 polyclonal antibody (Cat # PAB22336) shows strong cytoplasmic and nuclear positivity in trophoblastic cells and decidual cells.

Specification

Product Description	Rabbit polyclonal antibody raised against recombinant SLC18B1.
Immunogen	Recombinant protein corresponding to amino acids of human SLC18B1.
Sequence	FYLLEYSRRKRKRSKSNILSTEEERTTLLP
Host	Rabbit
Reactivity	Human
Form	Liquid
Purification	Antigen affinity purification
Isotype	IgG
Recommend Usage	Immunohistochemistry (1:50-1:200) The optimal working dilution should be determined by the end user.
Storage Buffer	In PBS, pH 7.2 (40% glycerol, 0.02% sodium azide)
Storage Instruction	Store at 4°C. For long term storage store at -20°C. Aliquot to avoid repeated freezing and thawing.

Note

This product contains sodium azide: a POISONOUS AND HAZARDOUS SUBSTANCE which should be handled by trained staff only.

Applications

- Immunohistochemistry (Formalin/PFA-fixed paraffin-embedded sections)

Immunohistochemical staining of human placenta with SLC18B1 polyclonal antibody (Cat # PAB22336) shows strong cytoplasmic and nuclear positivity in trophoblastic cells and decidual cells.

Gene Info — SLC18B1

Entrez GeneID [116843](#)

Protein Accession# [Q6NT16](#)

Gene Name SLC18B1

Gene Alias RP1-55C23.6, C6orf192, dJ55C23.6

Gene Description solute carrier family 18, subfamily B, member 1

Gene Ontology [Hyperlink](#)

Gene Summary This gene encodes a protein, which has high sequence similarity to rat, xenopus and zebrafish proteins. The protein function is unknown. [provided by RefSeq]

Other Designations MFS-type transporter C6orf192; MFS-type transporter SLC18B1; solute carrier family 18 member B1