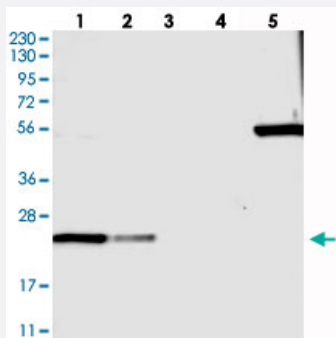


BCL2L15 polyclonal antibody

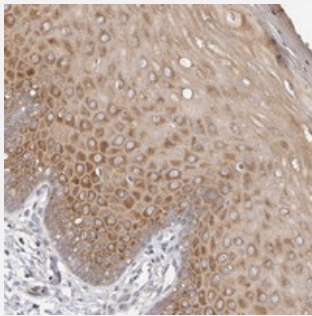
Catalog # PAB22335 Size 100 uL

Applications



Western Blot

Western blot analysis of Lane 1: RT-4, Lane 2: U-251 MG, Lane 3: Human Plasma, Lane 4: Liver, Lane 5: Tonsil with BCL2L15 polyclonal antibody (Cat # PAB22335).



Immunohistochemistry (Formalin/PFA-fixed paraffin-embedded sections)

Immunohistochemical staining of human cervix, uterine with BCL2L15 polyclonal antibody (Cat # PAB22335) shows moderate positivity in squamous epithelial cells.

Specification

Product Description	Rabbit polyclonal antibody raised against recombinant BCL2L15.
Immunogen	Recombinant protein corresponding to amino acids of human BCL2L15.
Sequence	QTGAILQNTVESLSKTWCAQDSSLAYERAFLAVSVKLLEYMAHIAPEVVGGQVAIPMTGMINGNQAI REFIQGGGWE
Host	Rabbit
Reactivity	Human
Form	Liquid

Purification	Antigen affinity purification
Isotype	IgG
Recommend Usage	Immunohistochemistry (1:200-1:500) Western Blot (1:250-1:500) The optimal working dilution should be determined by the end user.
Storage Buffer	In PBS, pH 7.2 (40% glycerol, 0.02% sodium azide)
Storage Instruction	Store at 4°C. For long term storage store at -20°C. Aliquot to avoid repeated freezing and thawing.
Note	This product contains sodium azide: a POISONOUS AND HAZARDOUS SUBSTANCE which should be handled by trained staff only.

Applications

- Western Blot

Western blot analysis of Lane 1: RT-4, Lane 2: U-251 MG, Lane 3: Human Plasma, Lane 4: Liver, Lane 5: Tonsil with BCL2L15 polyclonal antibody (Cat # PAB22335).

- Immunohistochemistry (Formalin/PFA-fixed paraffin-embedded sections)

Immunohistochemical staining of human cervix, uterine with BCL2L15 polyclonal antibody (Cat # PAB22335) shows moderate positivity in squamous epithelial cells.

Gene Info — BCL2L15

Entrez GeneID	440603
Protein Accession#	Q5TBC7
Gene Name	BCL2L15
Gene Alias	Bfk, C1orf178, FLJ22588
Gene Description	BCL2-like 15
Gene Ontology	Hyperlink
Other Designations	OTTHUMP00000013724 pro-apoptotic Bcl-2 protein