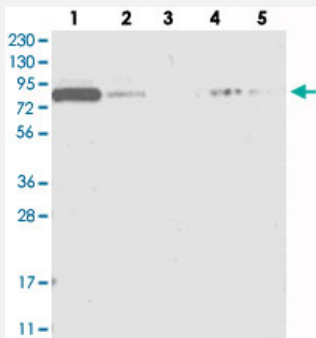


# APEH polyclonal antibody

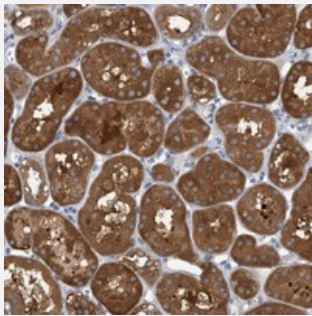
Catalog # PAB22332 Size 100 uL

## Applications



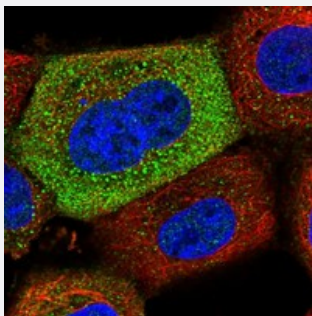
### Western Blot

Western blot analysis of Lane 1: RT-4, Lane 2: U-251 MG, Lane 3: Human Plasma, Lane 4: Liver, Lane 5: Tonsil with APEH polyclonal antibody (Cat # PAB22332) at 1:250-1:500 dilution.



### Immunohistochemistry (Formalin/PFA-fixed paraffin-embedded sections)

Immunohistochemical staining of human kidney with APEH polyclonal antibody (Cat # PAB22332) shows strong cytoplasmic positivity in tubular cells at 1:200-1:500 dilution.



### Immunofluorescence

Immunofluorescent staining of human cell line A-431 with APEH polyclonal antibody (Cat # PAB22332) at 1-4 ug/mL dilution shows positivity in cytoplasm.

## Specification

### Product Description

Rabbit polyclonal antibody raised against recombinant APEH.

### Immunogen

Recombinant protein corresponding to amino acids of human APEH.

Sequence	EAGFPFSSDCLPDLSVWAEMLDKSPIRYIPQVKTPLLLMLGQEDRRVPFKQGMEYYRALKTRNVP VRLLLYPKSTHALSEVEVESDSFMNAVL
Host	Rabbit
Reactivity	Human
Form	Liquid
Purification	Antigen affinity purification
Isotype	IgG
Recommend Usage	Immunohistochemistry (1:200-1:500) Western Blot (1:250-1:500) Immunofluorescence (1-4 ug/mL) The optimal working dilution should be determined by the end user.
Storage Buffer	In PBS, pH 7.2 (40% glycerol, 0.02% sodium azide)
Storage Instruction	Store at 4°C. For long term storage store at -20°C. Aliquot to avoid repeated freezing and thawing.
Note	This product contains sodium azide: a POISONOUS AND HAZARDOUS SUBSTANCE which should be handled by trained staff only.

## Applications

- Western Blot

Western blot analysis of Lane 1: RT-4, Lane 2: U-251 MG, Lane 3: Human Plasma, Lane 4: Liver, Lane 5: Tonsil with APEH polyclonal antibody (Cat # PAB22332) at 1:250-1:500 dilution.

- Immunohistochemistry (Formalin/PFA-fixed paraffin-embedded sections)

Immunohistochemical staining of human kidney with APEH polyclonal antibody (Cat # PAB22332) shows strong cytoplasmic positivity in tubular cells at 1:200-1:500 dilution.

- Immunofluorescence

Immunofluorescent staining of human cell line A-431 with APEH polyclonal antibody (Cat # PAB22332) at 1-4 ug/mL dilution shows positivity in cytoplasm.

## Gene Info — APEH

Entrez GeneID [327](#)

Protein Accession# [P13798](#)

Gene Name	APEH
Gene Alias	ACPH, APH, D3F15S2, D3S48E, DNF15S2, MGC2178, OPH
Gene Description	N-acylaminoacyl-peptide hydrolase
Omim ID	<a href="#">102645</a>
Gene Ontology	<a href="#">Hyperlink</a>
Gene Summary	<p>This gene encodes the enzyme acylpeptide hydrolase, which catalyzes the hydrolysis of the terminal acetylated amino acid preferentially from small acetylated peptides. The acetyl amino acid formed by this hydrolase is further processed to acetate and a free amino acid by an aminoacylase. This gene is located within the same region of chromosome 3 (3p21) as the aminoacylase gene, and deletions at this locus are also associated with a decrease in aminoacylase activity. The acylpeptide hydrolase is a homotetrameric protein of 300 kDa with each subunit consisting of 732 amino acid residues. It can play an important role in destroying oxidatively damaged proteins in living cells. Deletions of this gene locus are found in various types of carcinomas, including small cell lung carcinoma and renal cell carcinoma. [provided by RefSeq]</p>
Other Designations	acylaminoacyl-peptidase oxidized protein hydrolase

## Disease

- [Crohn Disease](#)
- [Genetic Predisposition to Disease](#)