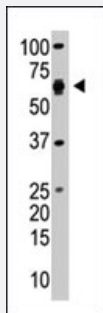


UBA2 polyclonal antibody

Catalog # PAB2233

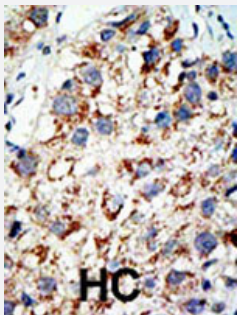
Size 400 uL

Applications



Western Blot (Cell lysate)

The UBA2 polyclonal antibody (Cat # PAB2233) is used in Western blot to detect UBA2 in Jurkat lysate.



Immunohistochemistry (Formalin/PFA-fixed paraffin-embedded sections)

Formalin-fixed and paraffin-embedded human hepatocellular carcinoma tissue reacted with the UBA2 polyclonal antibody (Cat # PAB2233), which was peroxidase-conjugated to the secondary antibody, followed by AEC staining. This data demonstrates the use of this antibody for immunohistochemistry; clinical relevance has not been evaluated. HC = hepatocarcinoma.

Specification

Product Description	Rabbit polyclonal antibody raised against synthetic peptide of UBA2.
Immunogen	A synthetic peptide (conjugated with KLH) corresponding to C-terminus of human UBA2.
Host	Rabbit
Reactivity	Human
Form	Liquid
Purification	Protein G purification

Recommend Usage	Western Blot (1:1000) Immunohistochemistry (1:50-100) The optimal working dilution should be determined by the end user.
Storage Buffer	In PBS (0.09% sodium azide)
Storage Instruction	Store at 4°C. For long term storage store at -20°C. Aliquot to avoid repeated freezing and thawing.
Note	This product contains sodium azide: a POISONOUS AND HAZARDOUS SUBSTANCE which should be handled by trained staff only.

Applications

- Western Blot (Cell lysate)

The UBA2 polyclonal antibody (Cat # PAB2233) is used in Western blot to detect UBA2 in Jurkat lysate.

- Immunohistochemistry (Formalin/PFA-fixed paraffin-embedded sections)

Formalin-fixed and paraffin-embedded human hepatocellular carcinoma tissue reacted with the UBA2 polyclonal antibody (Cat # PAB2233), which was peroxidase-conjugated to the secondary antibody, followed by AEC staining. This data demonstrates the use of this antibody for immunohistochemistry; clinical relevance has not been evaluated. HC = hepatocarcinoma.

Gene Info — UBA2

Entrez GeneID	10054
Protein Accession#	NP_005490
Gene Name	UBA2
Gene Alias	ARX, FLJ13058, HRIHFB2115, SAE2
Gene Description	ubiquitin-like modifier activating enzyme 2
Gene Ontology	Hyperlink
Gene Summary	ubiquitin-activating enzyme E1 homolog anthracycline-associated resistance
Other Designations	SUMO-1 activating enzyme subunit 2 SUMO1 activating enzyme subunit 2 UBA2, ubiquitin-activating enzyme E1 homolog anthracycline-associated resistance

Publication Reference

- [Identification of the enzyme required for activation of the small ubiquitin-like protein SUMO-1.](#)

Desterro JM, Rodriguez MS, Kemp GD, Hay RT.

The Journal of Biological Chemistry 1999 Apr; 274(15):10618.

- [Molecular cloning and characterization of human AOS1 and UBA2, components of the sentrin-activating enzyme complex.](#)

Gong L, Li B, Millas S, Yeh ET.

FEBS Letters 1999 Apr; 448(1):185.

- [In vitro SUMO-1 modification requires two enzymatic steps, E1 and E2.](#)

Okuma T, Honda R, Ichikawa G, Tsumagari N, Yasuda H.

Biochemical and Biophysical Research Communications 1999 Jan; 254(3):693.

Pathway

- [Ubiquitin mediated proteolysis](#)