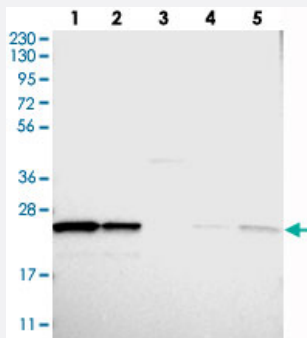


# PSMB1 polyclonal antibody

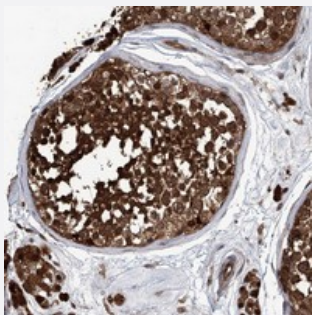
Catalog # PAB22318      Size 100 uL

## Applications



### Western Blot

Western blot analysis of Lane 1: RT-4, Lane 2: U-251 MG, Lane 3: Human Plasma, Lane 4: Liver, Lane 5: Tonsil with PSMB1 polyclonal antibody (Cat # PAB22318) at 1:250-1:500 dilution.



### Immunohistochemistry (Formalin/PFA-fixed paraffin-embedded sections)

Immunohistochemical staining of human testis with PSMB1 polyclonal antibody (Cat # PAB22318) shows strong cytoplasmic and nuclear positivity in cells in seminiferous ducts and Leydig cells at 1:200-1:500 dilution.

## Specification

<b>Product Description</b>	Rabbit polyclonal antibody raised against recombinant PSMB1.
<b>Immunogen</b>	Recombinant protein corresponding to amino acids of human PSMB1.
<b>Sequence</b>	YQRDSFKAGGSASAMLQPLLDNQVGFKNMQNVEHVPLSLDRAMRLVKDVFISAAERDVYTGDA LRICVTKEGIREETVSLRKD
<b>Host</b>	Rabbit
<b>Reactivity</b>	Human, Mouse, Rat
<b>Form</b>	Liquid

Purification	Antigen affinity purification
Isotype	IgG
Recommend Usage	Immunohistochemistry (1:200-1:500) Western Blot (1:250-1:500) The optimal working dilution should be determined by the end user.
Storage Buffer	In PBS, pH 7.2 (40% glycerol, 0.02% sodium azide)
Storage Instruction	Store at 4°C. For long term storage store at -20°C. Aliquot to avoid repeated freezing and thawing.
Note	This product contains sodium azide: a POISONOUS AND HAZARDOUS SUBSTANCE which should be handled by trained staff only.

## Applications

- Western Blot

Western blot analysis of Lane 1: RT-4, Lane 2: U-251 MG, Lane 3: Human Plasma, Lane 4: Liver, Lane 5: Tonsil with PSMB1 polyclonal antibody (Cat # PAB22318) at 1:250-1:500 dilution.

- Immunohistochemistry (Formalin/PFA-fixed paraffin-embedded sections)

Immunohistochemical staining of human testis with PSMB1 polyclonal antibody (Cat # PAB22318) shows strong cytoplasmic and nuclear positivity in cells in seminiferous ducts and Leydig cells at 1:200-1:500 dilution.

## Gene Info — PSMB1

Entrez GeneID	<a href="#">5689</a>
Protein Accession#	<a href="#">P20618</a>
Gene Name	PSMB1
Gene Alias	FLJ25321, HC5, KIAA1838, PMSB1, PSC5
Gene Description	proteasome (prosome, macropain) subunit, beta type, 1
Omim ID	<a href="#">602017</a>
Gene Ontology	<a href="#">Hyperlink</a>

**Gene Summary**

The proteasome is a multicatalytic proteinase complex with a highly ordered ring-shaped 20S core structure. The core structure is composed of 4 rings of 28 non-identical subunits; 2 rings are composed of 7 alpha subunits and 2 rings are composed of 7 beta subunits. Proteasomes are distributed throughout eukaryotic cells at a high concentration and cleave peptides in an ATP/ubiquitin-dependent process in a non-lysosomal pathway. An essential function of a modified proteasome, the immunoproteasome, is the processing of class I MHC peptides. This gene encodes a member of the proteasome B-type family, also known as the T1B family, that is a 20S core beta subunit. This gene is tightly linked to the TBP (TATA-binding protein) gene in human and in mouse, and is transcribed in the opposite orientation in both species. [provided by RefSeq]

**Other Designations**

macropain subunit C5|multicatalytic endopeptidase complex subunit C5|proteasome beta 1 subunit|proteasome component C5|proteasome gamma chain|proteasome subunit HC5

**Pathway**

- [Proteasome](#)

**Disease**

- [Diabetes Mellitus](#)
- [Genetic Predisposition to Disease](#)
- [Kidney Failure](#)