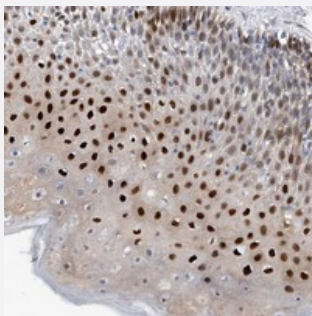


PHF20 polyclonal antibody

Catalog # PAB22313 Size 100 uL

Applications



Immunohistochemistry (Formalin/PFA-fixed paraffin-embedded sections)

Immunohistochemical staining of human oral mucosa with PHF20 polyclonal antibody (Cat # PAB22313) shows strong nuclear positivity in squamous epithelial cells at 1:200-1:500 dilution.

Specification

Product Description	Rabbit polyclonal antibody raised against recombinant PHF20.
Immunogen	Recombinant protein corresponding to amino acids of human PHF20.
Sequence	VRVKPKKKKKKKKTKPECPCSEEISDTSQEPSPPKAFVTRCGSSHKPGVHMSPQLHGPESG HHKGKVKALEEDNLSESSSESFLWSDDEYGQDQDVTNP
Host	Rabbit
Reactivity	Human
Form	Liquid
Purification	Antigen affinity purification
Isotype	IgG
Recommend Usage	Immunohistochemistry (1:200-1:500) The optimal working dilution should be determined by the end user.
Storage Buffer	In PBS, pH 7.2 (40% glycerol, 0.02% sodium azide)

Storage Instruction

Store at 4°C. For long term storage store at -20°C.
Aliquot to avoid repeated freezing and thawing.

Note

This product contains sodium azide: a POISONOUS AND HAZARDOUS SUBSTANCE which should be handled by trained staff only.

Applications

- Immunohistochemistry (Formalin/PFA-fixed paraffin-embedded sections)

Immunohistochemical staining of human oral mucosa with PHF20 polyclonal antibody (Cat # PAB22313) shows strong nuclear positivity in squamous epithelial cells at 1:200-1:500 dilution.

Gene Info — PHF20

Entrez GeneID [51230](#)

Protein Accession# [Q9BV10](#)

Gene Name PHF20

Gene Alias C20orf104, FLJ33479, GLEA2, HCA58, NZF, TZP

Gene Description PHD finger protein 20

Omim ID [610335](#)

Gene Ontology [Hyperlink](#)

Other Designations OTTHUMP00000030807|glioma-expressed antigen 2|hepatocellular carcinoma-associated antigen 58|transcription factor TZP