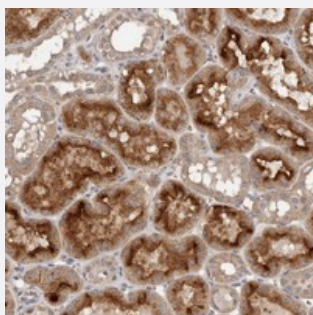


GRAMD2 polyclonal antibody

Catalog # PAB22290 Size 100 uL

Applications



Immunohistochemistry (Formalin/PFA-fixed paraffin-embedded sections)

Immunohistochemical staining of human kidney with GRAMD2 polyclonal antibody (Cat # PAB22290) shows strong cytoplasmic and membranous positivity in tubular cells.

Specification

Product Description	Rabbit polyclonal antibody raised against recombinant GRAMD2.
Immunogen	Recombinant protein corresponding to amino acids of human GRAMD2.
Sequence	RDSVYDLLRRVCTHLQPSSKKSLSVREFSGEPESLEVLIPEMKWRKVCSSRSLSLPDNIPCIPPSSVDSTDSFFPSRKPPMSEKSRAQVASENGGRWAWPMPGWGPACPKKMPNCSP TAKNAVYE
Host	Rabbit
Reactivity	Human
Form	Liquid
Purification	Antigen affinity purification
Isotype	IgG
Recommend Usage	Immunohistochemistry (1:50-1:200) The optimal working dilution should be determined by the end user.
Storage Buffer	In PBS, pH 7.2 (40% glycerol, 0.02% sodium azide)

Storage Instruction

Store at 4°C. For long term storage store at -20°C.
Aliquot to avoid repeated freezing and thawing.

Note

This product contains sodium azide: a POISONOUS AND HAZARDOUS SUBSTANCE which should be handled by trained staff only.

Applications

- Immunohistochemistry (Formalin/PFA-fixed paraffin-embedded sections)

Immunohistochemical staining of human kidney with GRAMD2 polyclonal antibody (Cat # PAB22290) shows strong cytoplasmic and membranous positivity in tubular cells.

Gene Info — GRAMD2

Entrez GeneID [196996](#)

Protein Accession# [Q8IU3](#)

Gene Name GRAMD2

Gene Alias -

Gene Description GRAM domain containing 2

Gene Ontology [Hyperlink](#)

Other Designations -