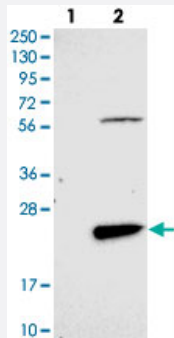


FAM167B polyclonal antibody

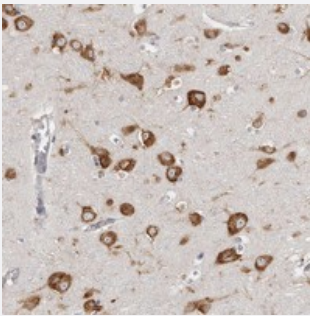
Catalog # PAB22281 Size 100 uL

Applications



Western Blot (Transfected lysate)

Western blot analysis of Lane 1: Negative control (vector only transfected HEK293T lysate), Lane 2: Over-expression Lysate (Co-expressed with a C-terminal myc-DDK tag (~3.1 kDa) in mammalian HEK293T cells) with FAM167B polyclonal antibody (Cat # PAB22281).



Immunohistochemistry (Formalin/PFA-fixed paraffin-embedded sections)

Immunohistochemical staining of human cerebral cortex with FAM167B polyclonal antibody (Cat # PAB22281) shows strong cytoplasmic positivity in neuronal cells.

Specification

Product Description	Rabbit polyclonal antibody raised against recombinant FAM167B.
Immunogen	Recombinant protein corresponding to amino acids of human FAM167B.
Sequence	MQAQDRQLAGQLRLRAQLHRLKMDQACHLHQELLDEAELELELEPGAGLALAPLLRHLGLTRM NISARRFTLC
Host	Rabbit
Reactivity	Human
Form	Liquid

Purification	Antigen affinity purification
Isotype	IgG
Recommend Usage	Immunohistochemistry (1:20-1:50) Western Blot (1:250-1:500) The optimal working dilution should be determined by the end user.
Storage Buffer	In PBS, pH 7.2 (40% glycerol, 0.02% sodium azide)
Storage Instruction	Store at 4°C. For long term storage store at -20°C. Aliquot to avoid repeated freezing and thawing.
Note	This product contains sodium azide: a POISONOUS AND HAZARDOUS SUBSTANCE which should be handled by trained staff only.

Applications

- Western Blot (Transfected lysate)

Western blot analysis of Lane 1: Negative control (vector only transfected HEK293T lysate), Lane 2: Over-expression Lysate (Co-expressed with a C-terminal myc-DDK tag (~3.1 kDa) in mammalian HEK293T cells) with FAM167B polyclonal antibody (Cat # PAB22281).

- Immunohistochemistry (Formalin/PFA-fixed paraffin-embedded sections)

Immunohistochemical staining of human cerebral cortex with FAM167B polyclonal antibody (Cat # PAB22281) shows strong cytoplasmic positivity in neuronal cells.

Gene Info — FAM167B

Entrez GeneID	84734
Protein Accession#	Q9BTA0
Gene Name	FAM167B
Gene Alias	C1orf90, MGC10820
Gene Description	family with sequence similarity 167, member B
Gene Ontology	Hyperlink
Gene Summary	O
Other Designations	OTTHUMP00000008639 hypothetical protein LOC84734

Disease

- [Cardiovascular Diseases](#)
- [Diabetes Mellitus](#)
- [Edema](#)