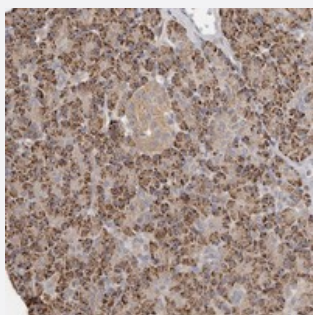


C21orf56 polyclonal antibody

Catalog # PAB22278

Size 100 uL

Applications



Immunohistochemistry (Formalin/PFA-fixed paraffin-embedded sections)

Immunohistochemical staining of human pancreas with C21orf56 polyclonal antibody (Cat # PAB22278) shows strong cytoplasmic positivity, with a granular pattern in exocrine glandular cells at 1:500-1:1000 dilution.

Specification

Product Description	Rabbit polyclonal antibody raised against recombinant C21orf56.
Immunogen	Recombinant protein corresponding to amino acids of human C21orf56.
Sequence	NADLKKQVRLLKENQMLRRLLSQSCQEGGGHDLLPPRAHAYPEAGSPGSGVPDFGRFTSVADT PSQLQTSSLEDLLCSHAPLSSEDD
Host	Rabbit
Reactivity	Human
Form	Liquid
Purification	Antigen affinity purification
Isotype	IgG
Recommend Usage	Immunohistochemistry (1:500-1:1000) The optimal working dilution should be determined by the end user.
Storage Buffer	In PBS, pH 7.2 (40% glycerol, 0.02% sodium azide)

Storage Instruction

Store at 4°C. For long term storage store at -20°C.
Aliquot to avoid repeated freezing and thawing.

Note

This product contains sodium azide: a POISONOUS AND HAZARDOUS SUBSTANCE which should be handled by trained staff only.

Applications

- Immunohistochemistry (Formalin/PFA-fixed paraffin-embedded sections)

Immunohistochemical staining of human pancreas with C21orf56 polyclonal antibody (Cat # PAB22278) shows strong cytoplasmic positivity, with a granular pattern in exocrine glandular cells at 1:500-1:1000 dilution.

Gene Info — C21orf56

Entrez GeneID[84221](#)**Protein Accession#**[Q9H0A9](#)**Gene Name**

C21orf56

Gene Alias

DKFZp434N0650, MGC99490

Gene Description

chromosome 21 open reading frame 56

Gene Ontology[Hyperlink](#)**Other Designations**

hypothetical protein LOC84221