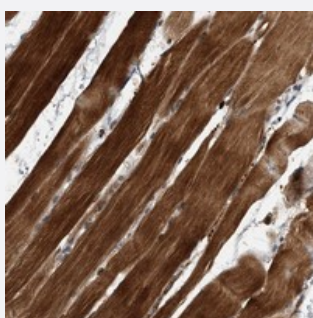


SOBP polyclonal antibody

Catalog # PAB22261 Size 100 uL

Applications



Immunohistochemistry (Formalin/PFA-fixed paraffin-embedded sections)

Immunohistochemical staining of human skeletal muscle with SOBP polyclonal antibody (Cat # PAB22261) shows strong cytoplasmic positivity in myocytes at 1:200-1:500 dilution.

Specification

Product Description	Rabbit polyclonal antibody raised against recombinant SOBP.
Immunogen	Recombinant protein corresponding to amino acids of human SOBP.
Sequence	SVPIIVLIPPPFIKPPAEDDVSNVQIMCAWCQKVGIKRYSLSMGSEVKSFCSKCFAACRRAYFK RNKARDEDGHAENFPQQH
Host	Rabbit
Reactivity	Human
Form	Liquid
Purification	Antigen affinity purification
Isotype	IgG
Recommend Usage	Immunohistochemistry (1:200-1:500) The optimal working dilution should be determined by the end user.
Storage Buffer	In PBS, pH 7.2 (40% glycerol, 0.02% sodium azide)

Storage Instruction

Store at 4°C. For long term storage store at -20°C.
Aliquot to avoid repeated freezing and thawing.

Note

This product contains sodium azide: a POISONOUS AND HAZARDOUS SUBSTANCE which should be handled by trained staff only.

Applications

- Immunohistochemistry (Formalin/PFA-fixed paraffin-embedded sections)

Immunohistochemical staining of human skeletal muscle with SOBP polyclonal antibody (Cat # PAB22261) shows strong cytoplasmic positivity in myocytes at 1:200-1:500 dilution.

Gene Info — SOBP

Entrez GeneID[55084](#)**Protein Accession#**[A7XYQ1](#)**Gene Name**

SOBP

Gene Alias

FLJ10159, JXC1

Gene Description

sine oculis binding protein homolog (Drosophila)

Gene Ontology[Hyperlink](#)**Other Designations**

sine oculis binding protein homolog

Disease

- [Tobacco Use Disorder](#)