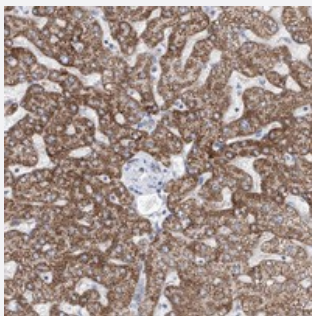


KHDC1 polyclonal antibody

Catalog # PAB22239 Size 100 uL

Applications



Immunohistochemistry (Formalin/PFA-fixed paraffin-embedded sections)

Immunohistochemical staining of human liver with KHDC1 polyclonal antibody (Cat # PAB22239) shows distinct cytoplasmic positivity in hepatocytes.

Specification

Product Description	Rabbit polyclonal antibody raised against recombinant KHDC1.
Immunogen	Recombinant protein corresponding to amino acids of human KHDC1.
Sequence	RERNRSRGKTRCRSKRSEQSMDMGTSALSCKPWWTLPQNFHAPMVFHMEEDQEELIFGHGD
Host	Rabbit
Reactivity	Human
Form	Liquid
Purification	Antigen affinity purification
Isotype	IgG
Recommend Usage	Immunohistochemistry (1:200-1:500) The optimal working dilution should be determined by the end user.
Storage Buffer	In PBS, pH 7.2 (40% glycerol, 0.02% sodium azide)
Storage Instruction	Store at 4°C. For long term storage store at -20°C. Aliquot to avoid repeated freezing and thawing.

Note

This product contains sodium azide: a POISONOUS AND HAZARDOUS SUBSTANCE which should be handled by trained staff only.

Applications

- Immunohistochemistry (Formalin/PFA-fixed paraffin-embedded sections)

Immunohistochemical staining of human liver with KHDC1 polyclonal antibody (Cat # PAB22239) shows distinct cytoplasmic positivity in hepatocytes.

Gene Info — KHDC1

Entrez GeneID	80759
---------------	-----------------------

Protein Accession#	Q4VXA5
--------------------	------------------------

Gene Name	KHDC1
-----------	-------

Gene Alias	C6orf148, MGC10818, NDG1, bA257K9.4
------------	-------------------------------------

Gene Description	KH homology domain containing 1
------------------	---------------------------------

Omim ID	611688
---------	------------------------

Gene Ontology	Hyperlink
---------------	---------------------------

Other Designations	OTTHUMP00000016734
--------------------	--------------------