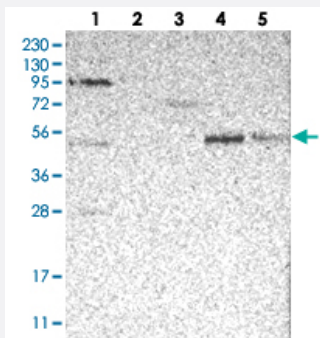


SAMD3 polyclonal antibody

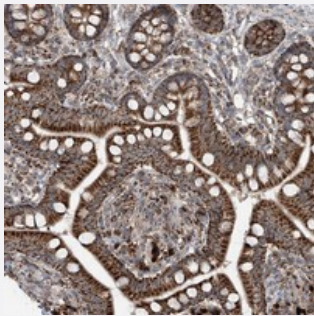
Catalog # PAB22235 Size 100 uL

Applications



Western Blot

Western blot analysis of Lane 1: RT-4, Lane 2: U-251 MG, Lane 3: Human Plasma, Lane 4: Liver, Lane 5: Tonsil with SAMD3 polyclonal antibody (Cat # PAB22235).



Immunohistochemistry (Formalin/PFA-fixed paraffin-embedded sections)

Immunohistochemical staining of human small intestine with SAMD3 polyclonal antibody (Cat # PAB22235) shows strong cytoplasmic positivity with granular pattern in glandular cells.

Specification

Product Description	Rabbit polyclonal antibody raised against recombinant SAMD3.
Immunogen	Recombinant protein corresponding to amino acids of human SAMD3.
Sequence	METWSVEQVCSWLVEKNLGELVHRFQEEEVSGAALLALNDRMVQQLVKKIGHQAVLMDLIKKYK QNTQGLKSPENPKKAALVMQTEAAR
Host	Rabbit
Reactivity	Human
Form	Liquid

Purification	Antigen affinity purification
Isotype	IgG
Recommend Usage	Immunohistochemistry (1:10-1:20) Western Blot (1:250-1:500) The optimal working dilution should be determined by the end user.
Storage Buffer	In PBS, pH 7.2 (40% glycerol, 0.02% sodium azide)
Storage Instruction	Store at 4°C. For long term storage store at -20°C. Aliquot to avoid repeated freezing and thawing.
Note	This product contains sodium azide: a POISONOUS AND HAZARDOUS SUBSTANCE which should be handled by trained staff only.

Applications

- Western Blot

Western blot analysis of Lane 1: RT-4, Lane 2: U-251 MG, Lane 3: Human Plasma, Lane 4: Liver, Lane 5: Tonsil with SAMD3 polyclonal antibody (Cat # PAB22235).

- Immunohistochemistry (Formalin/PFA-fixed paraffin-embedded sections)

Immunohistochemical staining of human small intestine with SAMD3 polyclonal antibody (Cat # PAB22235) shows strong cytoplasmic positivity with granular pattern in glandular cells.

Gene Info — SAMD3

Entrez GeneID	154075
Protein Accession#	Q8N6K7
Gene Name	SAMD3
Gene Alias	FLJ34563, MGC35163
Gene Description	sterile alpha motif domain containing 3
Gene Ontology	Hyperlink
Other Designations	OTTHUMP00000017195

Disease

- [Cognition](#)