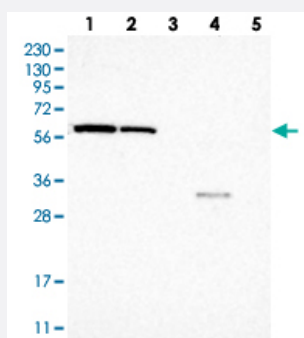


SAMD3 polyclonal antibody

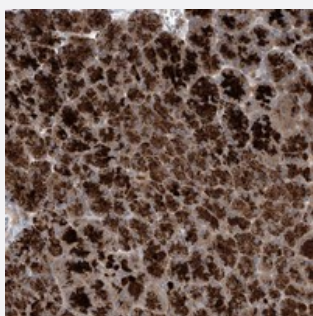
Catalog # PAB22234 Size 100 uL

Applications



Western Blot

Western blot analysis of Lane 1: RT-4, Lane 2: U-251 MG, Lane 3: Human Plasma, Lane 4: Liver, Lane 5: Tonsil with SAMD3 polyclonal antibody (Cat # PAB22234).



Immunohistochemistry (Formalin/PFA-fixed paraffin-embedded sections)

Immunohistochemical staining of human pancreas with SAMD3 polyclonal antibody (Cat # PAB22234) shows strong cytoplasmic positivity in exocrine glandular cells.

Specification

Product Description	Rabbit polyclonal antibody raised against recombinant SAMD3.
Immunogen	Recombinant protein corresponding to amino acids of human SAMD3.
Sequence	WKRALKDRFKYVRRPIEDDEQVIRNKCKFGHRRGQTRKSLADIRFDEIKLVQIKEEAVCFDSELDE HIKWFQQEYVKTEKDWR
Host	Rabbit
Reactivity	Human, Mouse, Rat
Form	Liquid

Purification	Antigen affinity purification
Isotype	IgG
Recommend Usage	Immunohistochemistry (1:20-1:50) Western Blot (1:250-1:500) The optimal working dilution should be determined by the end user.
Storage Buffer	In PBS, pH 7.2 (40% glycerol, 0.02% sodium azide)
Storage Instruction	Store at 4°C. For long term storage store at -20°C. Aliquot to avoid repeated freezing and thawing.
Note	This product contains sodium azide: a POISONOUS AND HAZARDOUS SUBSTANCE which should be handled by trained staff only.

Applications

- Western Blot

Western blot analysis of Lane 1: RT-4, Lane 2: U-251 MG, Lane 3: Human Plasma, Lane 4: Liver, Lane 5: Tonsil with SAMD3 polyclonal antibody (Cat # PAB22234).

- Immunohistochemistry (Formalin/PFA-fixed paraffin-embedded sections)

Immunohistochemical staining of human pancreas with SAMD3 polyclonal antibody (Cat # PAB22234) shows strong cytoplasmic positivity in exocrine glandular cells.

Gene Info — SAMD3

Entrez GeneID	154075
Protein Accession#	Q8N6K7
Gene Name	SAMD3
Gene Alias	FLJ34563, MGC35163
Gene Description	sterile alpha motif domain containing 3
Gene Ontology	Hyperlink
Other Designations	OTTHUMP00000017195

Disease

- [Cognition](#)