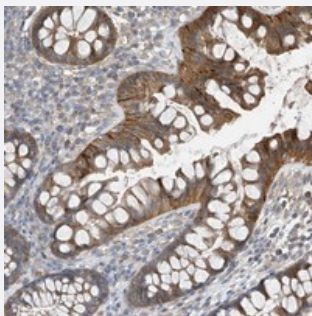


PHACTR4 polyclonal antibody

Catalog # PAB22233 Size 100 uL

Applications



Immunohistochemistry (Formalin/PFA-fixed paraffin-embedded sections)

Immunohistochemical staining of human colon with PHACTR4 polyclonal antibody (Cat # PAB22233) shows moderate cytoplasmic positivity in glandular cells at 1:50-1:200 dilution.

Specification

Product Description	Rabbit polyclonal antibody raised against recombinant PHACTR4.
Immunogen	Recombinant protein corresponding to amino acids of human PHACTR4.
Sequence	GRTRSLPITIEMLKVPDDEEEEEETCPSTFSEEMTPTSVIPKLPQCLREEEEEKESDSDSEGPIQYR DEEDEDESYQSALANKVKRKDTLAMKLNHRPSE
Host	Rabbit
Reactivity	Human
Form	Liquid
Purification	Antigen affinity purification
Isotype	IgG
Recommend Usage	Immunohistochemistry (1:50-1:200) The optimal working dilution should be determined by the end user.
Storage Buffer	In PBS, pH 7.2 (40% glycerol, 0.02% sodium azide)

Storage Instruction

Store at 4°C. For long term storage store at -20°C.
Aliquot to avoid repeated freezing and thawing.

Note

This product contains sodium azide: a POISONOUS AND HAZARDOUS SUBSTANCE which should be handled by trained staff only.

Applications

- Immunohistochemistry (Formalin/PFA-fixed paraffin-embedded sections)

Immunohistochemical staining of human colon with PHACTR4 polyclonal antibody (Cat # PAB22233) shows moderate cytoplasmic positivity in glandular cells at 1:50-1:200 dilution.

Gene Info — PHACTR4

Entrez GeneID[65979](#)**Protein Accession#**[Q8IZ21](#)**Gene Name**

PHACTR4

Gene Alias

DKFZp686L07205, FLJ13171, MGC20618, MGC34186

Gene Description

phosphatase and actin regulator 4

Omim ID[608726](#)**Gene Ontology**[Hyperlink](#)**Gene Summary**

This gene encodes a member of the phosphatase and actin regulator (PHACTR) family. Other PHACTR family members have been shown to inhibit protein phosphatase 1 (PP1) activity, and the homolog of this gene in the mouse has been shown to interact with actin and PP1. Multiple transcript variants encoding different isoforms have been found for this gene. [provided by RefSeq]

Other Designations

OTTHUMP00000003648|OTTHUMP000000083481