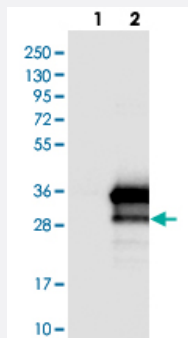


# RILPL2 polyclonal antibody

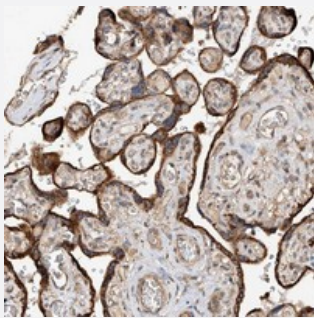
Catalog # PAB22230      Size 100 uL

## Applications



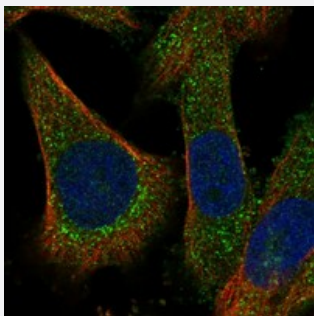
### Western Blot (Transfected lysate)

Western blot analysis of Lane 1: Negative control (vector only transfected HEK293T lysate), Lane 2: Over-expression Lysate (Co-expressed with a C-terminal myc-DDK tag (~3.1 kDa) in mammalian HEK293T cells) with RILPL2 polyclonal antibody (Cat # PAB22230) at 1:250-1:500 dilution.



### Immunohistochemistry (Formalin/PFA-fixed paraffin-embedded sections)

Immunohistochemical staining of human placenta with RILPL2 polyclonal antibody (Cat # PAB22230) shows strong cytoplasmic positivity in trophoblastic cells at 1:200-1:500 dilution.



### Immunofluorescence

Immunofluorescent staining of human cell line U-251MG with RILPL2 polyclonal antibody (Cat # PAB22230) at 1-4 ug/mL dilution shows positivity in cytoplasm.

## Specification

### Product Description

Rabbit polyclonal antibody raised against recombinant RILPL2.

### Immunogen

Recombinant protein corresponding to amino acids of human RILPL2.

<b>Sequence</b>	EERDEVGPEGALGKSPFQLTAEDVYDISYLLGRELMALGSDPRVTQLQFKVVRVLEMLEALVNE GSLALEELKMERDHLRKEVEGLRRQSPPASGEVNLGPNKMVVDLTDPNRPRFTLQELRDVLQE RNKLLK
<b>Host</b>	Rabbit
<b>Reactivity</b>	Human
<b>Form</b>	Liquid
<b>Purification</b>	Antigen affinity purification
<b>Isotype</b>	IgG
<b>Recommend Usage</b>	Immunohistochemistry (1:200-1:500) Western Blot (1:250-1:500) Immunofluorescence (1-4 ug/mL) The optimal working dilution should be determined by the end user.
<b>Storage Buffer</b>	In PBS, pH 7.2 (40% glycerol, 0.02% sodium azide)
<b>Storage Instruction</b>	Store at 4°C. For long term storage store at -20°C. Aliquot to avoid repeated freezing and thawing.
<b>Note</b>	This product contains sodium azide: a POISONOUS AND HAZARDOUS SUBSTANCE which should be handled by trained staff only.

## Applications

- Western Blot (Transfected lysate)

Western blot analysis of Lane 1: Negative control (vector only transfected HEK293T lysate), Lane 2: Over-expression Lysate (Co-expressed with a C-terminal myc-DDK tag (~3.1 kDa) in mammalian HEK293T cells) with RILPL2 polyclonal antibody (Cat # PAB22230) at 1:250-1:500 dilution.

- Immunohistochemistry (Formalin/PFA-fixed paraffin-embedded sections)

Immunohistochemical staining of human placenta with RILPL2 polyclonal antibody (Cat # PAB22230) shows strong cytoplasmic positivity in trophoblastic cells at 1:200-1:500 dilution.

- Immunofluorescence

Immunofluorescent staining of human cell line U-251MG with RILPL2 polyclonal antibody (Cat # PAB22230) at 1-4 ug/mL dilution shows positivity in cytoplasm.

## Gene Info — RILPL2

Entrez GeneID

[196383](#)

Protein Accession#	<a href="#">Q969X0</a>
Gene Name	RILPL2
Gene Alias	FLJ30380, FLJ32372, MGC7036
Gene Description	Rab interacting lysosomal protein-like 2
Gene Ontology	<a href="#">Hyperlink</a>
Other Designations	-