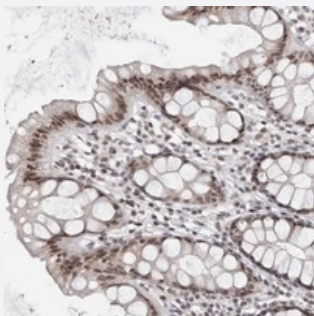


SRCAP polyclonal antibody

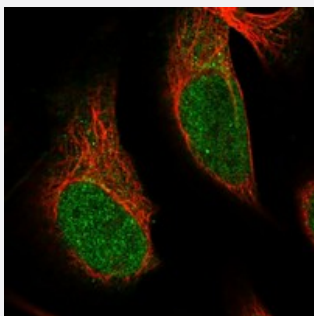
Catalog # PAB22228 Size 100 uL

Applications



Immunohistochemistry (Formalin/PFA-fixed paraffin-embedded sections)

Immunohistochemical staining of human rectum with SRCAP polyclonal antibody (Cat # PAB22228) shows nuclear positivity in glandular cells.



Immunofluorescence

Immunofluorescent staining of human cell line U-2 OS with SRCAP polyclonal antibody (Cat # PAB22228) at 1-4 ug/mL dilution shows positivity in nucleus.

Specification

Product Description	Rabbit polyclonal antibody raised against recombinant SRCAP.
Immunogen	Recombinant protein corresponding to amino acids of human SRCAP.
Sequence	AQALASPESLELASVASSETSSLSLVPPKDLLPVAVEILPVSEKNLSLTPSAPSLTLEAGSIPNGQ EQEAPDSAEGTTLTVLPEGEELPLCVSESNGLELPPSAASDEPLQEPLADRTSEELTEAKTPTS S
Host	Rabbit
Reactivity	Human
Form	Liquid

Purification	Antigen affinity purification
Isotype	IgG
Recommend Usage	Immunohistochemistry (1:10-1:20) Immunofluorescence (1-4 ug/mL) The optimal working dilution should be determined by the end user.
Storage Buffer	In PBS, pH 7.2 (40% glycerol, 0.02% sodium azide)
Storage Instruction	Store at 4°C. For long term storage store at -20°C. Aliquot to avoid repeated freezing and thawing.
Note	This product contains sodium azide: a POISONOUS AND HAZARDOUS SUBSTANCE which should be handled by trained staff only.

Applications

- Immunohistochemistry (Formalin/PFA-fixed paraffin-embedded sections)

Immunohistochemical staining of human rectum with SRCAP polyclonal antibody (Cat # PAB22228) shows nuclear positivity in glandular cells.

- Immunofluorescence

Immunofluorescent staining of human cell line U-2 OS with SRCAP polyclonal antibody (Cat # PAB22228) at 1-4 ug/mL dilution shows positivity in nucleus.

Gene Info — SRCAP

Entrez GeneID	10847
Protein Accession#	Q6ZRS2
Gene Name	SRCAP
Gene Alias	DOMO1, EAF1, FLJ44499, KIAA0309, SWR1
Gene Description	Snf2-related CREBBP activator protein
Omim ID	611421
Gene Ontology	Hyperlink
Gene Summary	domino homolog 1

Other Designations

OTTHUMP00000163226|Snf2-related CBP activator protein|Swi2/Snf2-related ATPase homolog
, domino homolog 1

Publication Reference

- [LncGPR107 drives the self-renewal of liver tumor initiating cells and liver tumorigenesis through GPR107-dependent manner.](#)

Huang G, Jiang H, Lin Y, Xia W, Luo Y, Wu Y, Cai W, Zhou X, Jiang X.

Journal of Experimental & Clinical Cancer Research 2018 Jun; 37(1):121.

Application: ChIP, WB, Human, HCC cells