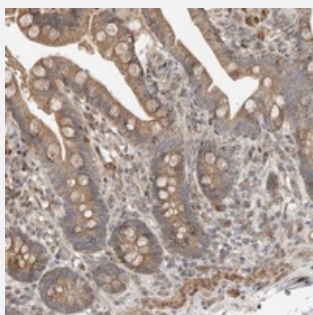


# SLC6A7 polyclonal antibody

Catalog # PAB22226      Size 100 uL

## Applications



### Immunohistochemistry (Formalin/PFA-fixed paraffin-embedded sections)

Immunohistochemical staining of human colon with SLC6A7 polyclonal antibody (Cat # PAB22226) shows moderate cytoplasmic positivity in glandular cells at 1:20-1:50 dilution.

## Specification

<b>Product Description</b>	Rabbit polyclonal antibody raised against recombinant SLC6A7.
<b>Immunogen</b>	Recombinant protein corresponding to amino acids of human SLC6A7.
<b>Sequence</b>	SLTSDLPWEHCGNWWNTELCLEHRVSKDGNALPLNLTCTVSPSEEYWSRYVLHIQGSQGIGSPG
<b>Host</b>	Rabbit
<b>Reactivity</b>	Human
<b>Form</b>	Liquid
<b>Purification</b>	Antigen affinity purification
<b>Isotype</b>	IgG
<b>Recommend Usage</b>	Immunohistochemistry (1:20-1:50) The optimal working dilution should be determined by the end user.
<b>Storage Buffer</b>	In PBS, pH 7.2 (40% glycerol, 0.02% sodium azide)

**Storage Instruction**

Store at 4°C. For long term storage store at -20°C.  
Aliquot to avoid repeated freezing and thawing.

**Note**

This product contains sodium azide: a POISONOUS AND HAZARDOUS SUBSTANCE which should be handled by trained staff only.

## Applications

- Immunohistochemistry (Formalin/PFA-fixed paraffin-embedded sections)

Immunohistochemical staining of human colon with SLC6A7 polyclonal antibody (Cat # PAB22226) shows moderate cytoplasmic positivity in glandular cells at 1:20-1:50 dilution.

## Gene Info — SLC6A7

**Entrez GeneID**[6534](#)**Protein Accession#**[Q99884](#)**Gene Name**

SLC6A7

**Gene Alias**

PROT

**Gene Description**

solute carrier family 6 (neurotransmitter transporter, L-proline), member 7

**Omim ID**[606205](#)**Gene Ontology**[Hyperlink](#)**Gene Summary**

This gene is a member of the gamma-aminobutyric acid (GABA) neurotransmitter gene family and encodes a high-affinity mammalian brain L-proline transporter protein. This transporter protein differs from other sodium-dependent plasma membrane carriers by its pharmacological specificity, kinetic properties, and ionic requirements. [provided by RefSeq]

**Other Designations**

brain-specific L-proline transporter|sodium-dependent proline transporter|solute carrier family 6, member 7

## Disease

- [Asthma](#)
- [Disease Models](#)
- [Genetic Predisposition to Disease](#)

- [Hyperparathyroidism](#)
- [Tobacco Use Disorder](#)