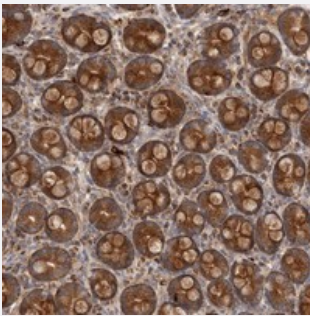


GOT1L1 polyclonal antibody

Catalog # PAB22216 Size 100 uL

Applications



Immunohistochemistry (Formalin/PFA-fixed paraffin-embedded sections)

Immunohistochemical staining of human duodenum with GOT1L1 polyclonal antibody (Cat # PAB22216) strong cytoplasmic positivity in glandular cells at 1:20-1:50 dilution.

Specification

| | |
|---------------------|--|
| Product Description | Rabbit polyclonal antibody raised against recombinant GOT1L1. |
| Immunogen | Recombinant protein corresponding to amino acids of human GOT1L1. |
| Sequence | YRVCMTNEGHPWVSLVVQKTRLQISQDPSLNYEYLPMTMGLKSFIQASLALLFGKHSQAVENRVGGVHTVGD |
| Host | Rabbit |
| Reactivity | Human |
| Form | Liquid |
| Purification | Antigen affinity purification |
| Isotype | IgG |
| Recommend Usage | Immunohistochemistry (1:20-1:50) The optimal working dilution should be determined by the end user. |
| Storage Buffer | In PBS, pH 7.2 (40% glycerol, 0.02% sodium azide) |

Storage Instruction

Store at 4°C. For long term storage store at -20°C.
Aliquot to avoid repeated freezing and thawing.

Note

This product contains sodium azide: a POISONOUS AND HAZARDOUS SUBSTANCE which should be handled by trained staff only.

Applications

- Immunohistochemistry (Formalin/PFA-fixed paraffin-embedded sections)

Immunohistochemical staining of human duodenum with GOT1L1 polyclonal antibody (Cat # PAB22216) strong cytoplasmic positivity in glandular cells at 1:20-1:50 dilution.

Gene Info — GOT1L1

Entrez GeneID[137362](#)**Protein Accession#**[Q8NHS2](#)**Gene Name**

GOT1L1

Gene Alias

MGC33309

Gene Description

glutamic-oxaloacetic transaminase 1-like 1

Gene Ontology[Hyperlink](#)**Other Designations**

-