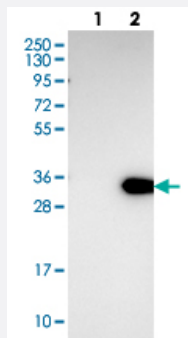


LRP5L polyclonal antibody

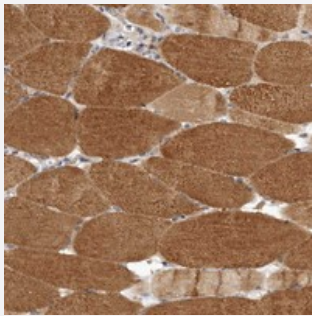
Catalog # PAB22211 Size 100 uL

Applications



Western Blot (Transfected lysate)

Western blot analysis of Lane 1: Negative control (vector only transfected HEK293T lysate), Lane 2: Over-expression Lysate (Co-expressed with a C-terminal myc-DDK tag (~3.1 kDa) in mammalian HEK293T cells) with LRP5L polyclonal antibody (Cat # PAB22211) at 1:250-1:500 dilution.



Immunohistochemistry (Formalin/PFA-fixed paraffin-embedded sections)

Immunohistochemical staining of human skeletal muscle with LRP5L polyclonal antibody (Cat # PAB22211) shows moderate cytoplasmic positivity in myocytes at 1:10-1:20 dilution.

Specification

Product Description	Rabbit polyclonal antibody raised against recombinant LRP5L.
Immunogen	Recombinant protein corresponding to amino acids of human LRP5L.
Sequence	VIIDQLPDL MGLKAVNV DKKVVG TNP HADRNGGAATCASSRPTQPGLAAPSRAWN
Host	Rabbit
Reactivity	Human
Form	Liquid
Purification	Antigen affinity purification

Isotype	IgG
Recommend Usage	Immunohistochemistry (1:10-1:20) Western Blot (1:250-1:500) The optimal working dilution should be determined by the end user.
Storage Buffer	In PBS, pH 7.2 (40% glycerol, 0.02% sodium azide)
Storage Instruction	Store at 4°C. For long term storage store at -20°C. Aliquot to avoid repeated freezing and thawing.
Note	This product contains sodium azide: a POISONOUS AND HAZARDOUS SUBSTANCE which should be handled by trained staff only.

Applications

- Western Blot (Transfected lysate)

Western blot analysis of Lane 1: Negative control (vector only transfected HEK293T lysate), Lane 2: Over-expression Lysate (Co-expressed with a C-terminal myc-DDK tag (~3.1 kDa) in mammalian HEK293T cells) with LRP5L polyclonal antibody (Cat # PAB22211) at 1:250-1:500 dilution.

- Immunohistochemistry (Formalin/PFA-fixed paraffin-embedded sections)

Immunohistochemical staining of human skeletal muscle with LRP5L polyclonal antibody (Cat # PAB22211) shows moderate cytoplasmic positivity in myocytes at 1:10-1:20 dilution.

Gene Info — LRP5L

Entrez GeneID	91355
Protein Accession#	A4QPB2
Gene Name	LRP5L
Gene Alias	DKFZp434O0213
Gene Description	low density lipoprotein receptor-related protein 5-like
Gene Ontology	Hyperlink
Other Designations	-