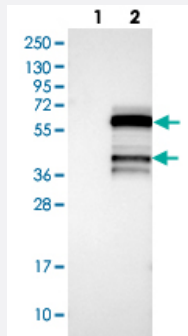


# PIP3-E polyclonal antibody

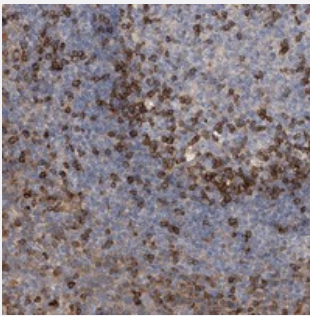
Catalog # PAB22210      Size 100 uL

## Applications



### Western Blot (Transfected lysate)

Western blot analysis of Lane 1: Negative control (vector only transfected HEK293T lysate), Lane 2: Over-expression Lysate (Co-expressed with a C-terminal myc-DDK tag (~3.1 kDa) in mammalian HEK293T cells) with PIP3-E polyclonal antibody (Cat # PAB22210).



### Immunohistochemistry (Formalin/PFA-fixed paraffin-embedded sections)

Immunohistochemical staining of human tonsil with PIP3-E polyclonal antibody (Cat # PAB22210) shows strong cytoplasmic positivity in subsets of lymphoid cells.

## Specification

<b>Product Description</b>	Rabbit polyclonal antibody raised against recombinant PIP3-E.
<b>Immunogen</b>	Recombinant protein corresponding to amino acids of human PIP3-E.
<b>Sequence</b>	LNSLSSDDTSSLSSNHDHLTVDPKPAGSKIMDKKEETKVSEDDMEKLYKSLEQASLSPLGDRR
<b>Host</b>	Rabbit
<b>Reactivity</b>	Human
<b>Form</b>	Liquid
<b>Purification</b>	Antigen affinity purification

Isotype	IgG
Recommend Usage	Immunohistochemistry (1:20-1:50) Western Blot (1:250-1:500) The optimal working dilution should be determined by the end user.
Storage Buffer	In PBS, pH 7.2 (40% glycerol, 0.02% sodium azide)
Storage Instruction	Store at 4°C. For long term storage store at -20°C. Aliquot to avoid repeated freezing and thawing.
Note	This product contains sodium azide: a POISONOUS AND HAZARDOUS SUBSTANCE which should be handled by trained staff only.

## Applications

- Western Blot (Transfected lysate)

Western blot analysis of Lane 1: Negative control (vector only transfected HEK293T lysate), Lane 2: Over-expression Lysate (Co-expressed with a C-terminal myc-DDK tag (~3.1 kDa) in mammalian HEK293T cells) with PIP3-E polyclonal antibody (Cat # PAB22210).

- Immunohistochemistry (Formalin/PFA-fixed paraffin-embedded sections)

Immunohistochemical staining of human tonsil with PIP3-E polyclonal antibody (Cat # PAB22210) shows strong cytoplasmic positivity in subsets of lymphoid cells.

## Gene Info — PIP3-E

Entrez GeneID	<a href="#">26034</a>
Protein Accession#	<a href="#">Q8WWN9</a>
Gene Name	PIP3-E
Gene Alias	IPCEF1, KIAA0403, RP3-402L9.2
Gene Description	phosphoinositide-binding protein PIP3-E
Gene Ontology	<a href="#">Hyperlink</a>
Other Designations	interaction protein for cytohesin exchange factors 1 Interaction protein for cytohesin exchange factors 1

## Disease

- [Cardiovascular Diseases](#)
- [Diabetes Mellitus](#)
- [Edema](#)
- [Tobacco Use Disorder](#)