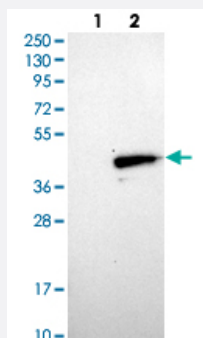


MARC1 polyclonal antibody

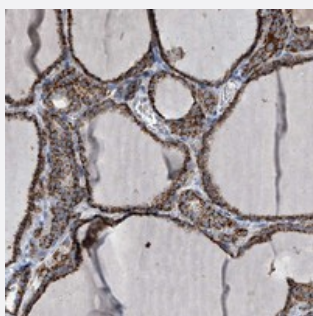
Catalog # PAB22208 Size 100 uL

Applications



Western Blot (Transfected lysate)

Western blot analysis of Lane 1: Negative control (vector only transfected HEK293T lysate), Lane 2: Over-expression Lysate (Co-expressed with a C-terminal myc-DDK tag (~3.1 kDa) in mammalian HEK293T cells) with MARC1 polyclonal antibody (Cat # PAB22208) at 1:250-1:500 dilution.



Immunohistochemistry (Formalin/PFA-fixed paraffin-embedded sections)

Immunohistochemical staining of human thyroid gland with MARC1 polyclonal antibody (Cat # PAB22208) strong cytoplasmic positivity in glandular cells at 1:10-1:20 dilution.

Specification

Product Description	Rabbit polyclonal antibody raised against recombinant MARC1.
Immunogen	Recombinant protein corresponding to amino acids of human MARC1.
Sequence	NQEGNMVTARQEPRVLISLTCDGDTLTLAAYTKDLLLPKTPPTTNAVHKCRVHGLEIEGRDCGE ATAQWITSFLKSQPYRLVHFEPHMRPRRPHQIADLFRPKDQIAYSDTSPFLILSEASLADLNSRLEK KVKATNFRPNVISGC
Host	Rabbit
Reactivity	Human
Form	Liquid

Purification	Antigen affinity purification
Isotype	IgG
Recommend Usage	Immunohistochemistry (1:10-1:20) Western Blot (1:250-1:500) The optimal working dilution should be determined by the end user.
Storage Buffer	In PBS, pH 7.2 (40% glycerol, 0.02% sodium azide)
Storage Instruction	Store at 4°C. For long term storage store at -20°C. Aliquot to avoid repeated freezing and thawing.
Note	This product contains sodium azide: a POISONOUS AND HAZARDOUS SUBSTANCE which should be handled by trained staff only.

Applications

- Western Blot (Transfected lysate)

Western blot analysis of Lane 1: Negative control (vector only transfected HEK293T lysate), Lane 2: Over-expression Lysate (Co-expressed with a C-terminal myc-DDK tag (~3.1 kDa) in mammalian HEK293T cells) with MARC1 polyclonal antibody (Cat # PAB22208) at 1:250-1:500 dilution.

- Immunohistochemistry (Formalin/PFA-fixed paraffin-embedded sections)

Immunohistochemical staining of human thyroid gland with MARC1 polyclonal antibody (Cat # PAB22208) strong cytoplasmic positivity in glandular cells at 1:10-1:20 dilution.

Gene Info — MARC1

Entrez GeneID	64757
Protein Accession#	Q5VT66
Gene Name	MARC1
Gene Alias	RP11-295M18.1, MOSC1
Gene Description	mitochondrial amidoxime reducing component 1
Gene Ontology	Hyperlink
Gene Summary	mitochondrial; moco sulfurase C-terminal domain-containing protein 1; molybdenum cofactor sulfurase C-terminal domain-containing protein 1

Other Designations

MOCO sulphurase C-terminal domain containing 1; MOSC domain-containing protein 1, mitochondrial; moco sulfurase C-terminal domain-containing protein 1; molybdenum cofactor sulfurase C-terminal domain-containing protein 1
