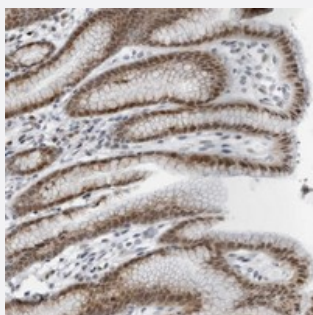


PPP1R42 polyclonal antibody

Catalog # PAB22194 Size 100 uL

Applications



Immunohistochemistry (Formalin/PFA-fixed paraffin-embedded sections)

Immunohistochemical staining of human stomach with PPP1R42 polyclonal antibody (Cat # PAB22194) shows moderate nuclear positivity in glandular cells.

Specification

Product Description	Rabbit polyclonal antibody raised against recombinant PPP1R42.
Immunogen	Recombinant protein corresponding to amino acids of human PPP1R42.
Sequence	MVRLTLDLIARNSNLKPRKEETISQCLKKITHINFSDKNIDAIEDLSLCKNLSVLVLYDNCISQITNLNYA TN
Host	Rabbit
Reactivity	Human
Form	Liquid
Purification	Antigen affinity purification
Isotype	IgG
Recommend Usage	Immunohistochemistry (1:500-1:1000) The optimal working dilution should be determined by the end user.
Storage Buffer	In PBS, pH 7.2 (40% glycerol, 0.02% sodium azide)

Storage Instruction

Store at 4°C. For long term storage store at -20°C.
Aliquot to avoid repeated freezing and thawing.

Note

This product contains sodium azide: a POISONOUS AND HAZARDOUS SUBSTANCE which should be handled by trained staff only.

Applications

- Immunohistochemistry (Formalin/PFA-fixed paraffin-embedded sections)

Immunohistochemical staining of human stomach with PPP1R42 polyclonal antibody (Cat # PAB22194) shows moderate nuclear positivity in glandular cells.

Gene Info — PPP1R42

Entrez GeneID [286187](#)

Protein Accession# [Q7Z4L9](#)

Gene Name PPP1R42

Gene Alias LRRC67, TLLR, dtr

Gene Description protein phosphatase 1, regulatory subunit 42

Gene Ontology [Hyperlink](#)

Gene Summary leucine rich repeat containing 67; leucine-rich repeat-containing protein 67; protein phosphatase 1 regulatory subunit 42; testis leucine-rich repeat

Other Designations leucine rich repeat containing 67; leucine-rich repeat-containing protein 67; protein phosphatase 1 regulatory subunit 42; testis leucine-rich repeat