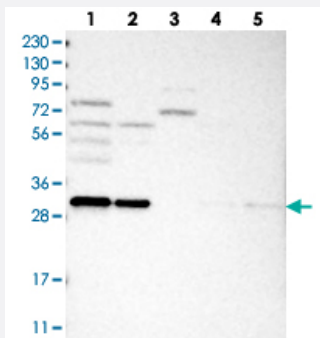


GEMIN8 polyclonal antibody

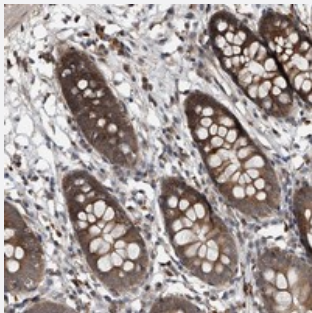
Catalog # PAB22193 Size 100 uL

Applications



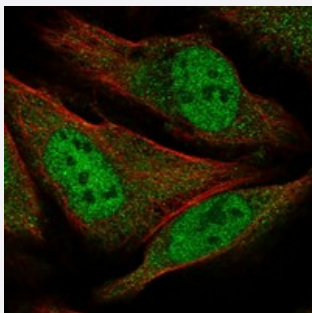
Western Blot

Western blot analysis of Lane 1: RT-4, Lane 2: U-251 MG, Lane 3: Human Plasma, Lane 4: Liver, Lane 5: Tonsil with GEMIN8 polyclonal antibody (Cat # PAB22193) at 1:250-1:500 dilution.



Immunohistochemistry (Formalin/PFA-fixed paraffin-embedded sections)

Immunohistochemical staining of human colon with GEMIN8 polyclonal antibody (Cat # PAB22193) shows moderate cytoplasmic positivity in glandular cells at 1:20-1:50 dilution.



Immunofluorescence

Immunofluorescent staining of human cell line U-2 OS with GEMIN8 polyclonal antibody (Cat # PAB22193) at 1-4 ug/mL dilution shows positivity in nucleus but not nucleoli and cytoplasm.

Specification

Product Description

Rabbit polyclonal antibody raised against recombinant GEMIN8.

Immunogen

Recombinant protein corresponding to amino acids of human GEMIN8.

Sequence	ASTSKATRPWYSHPVYARYWQHYHQAMAWMQSHHNAYRKAVESCFNLPWYLP SALLPQSSYDN EAAYPQSFYDHHVAWQDYPCSSSHFRRSGQHPRYSSRIQASTKEDQALSKEEEMETESDAEVE CDLSNMEITEELRQYFAETER
Host	Rabbit
Reactivity	Human
Form	Liquid
Purification	Antigen affinity purification
Isotype	IgG
Recommend Usage	Immunohistochemistry (1:20-1:50) Western Blot (1:250-1:500) Immunofluorescence (1-4 ug/mL) The optimal working dilution should be determined by the end user.
Storage Buffer	In PBS, pH 7.2 (40% glycerol, 0.02% sodium azide)
Storage Instruction	Store at 4°C. For long term storage store at -20°C. Aliquot to avoid repeated freezing and thawing.
Note	This product contains sodium azide: a POISONOUS AND HAZARDOUS SUBSTANCE which should be handled by trained staff only.

Applications

- Western Blot

Western blot analysis of Lane 1: RT-4, Lane 2: U-251 MG, Lane 3: Human Plasma, Lane 4: Liver, Lane 5: Tonsil with GEMIN8 polyclonal antibody (Cat # PAB22193) at 1:250-1:500 dilution.

- Immunohistochemistry (Formalin/PFA-fixed paraffin-embedded sections)

Immunohistochemical staining of human colon with GEMIN8 polyclonal antibody (Cat # PAB22193) shows moderate cytoplasmic positivity in glandular cells at 1:20-1:50 dilution.

- Immunofluorescence

Immunofluorescent staining of human cell line U-2 OS with GEMIN8 polyclonal antibody (Cat # PAB22193) at 1-4 ug/mL dilution shows positivity in nucleus but not nucleoli and cytoplasm.

Gene Info — GEMIN8

Entrez GeneID [54960](#)

Protein Accession#	Q9NWZ8
Gene Name	GEMIN8
Gene Alias	FAM51A1, FLJ20514, FLJ43072
Gene Description	gem (nuclear organelle) associated protein 8
Gene Ontology	Hyperlink
Gene Summary	member A1
Other Designations	OTTHUMP00000022942 OTTHUMP00000022943 family with sequence similarity 51, member A1