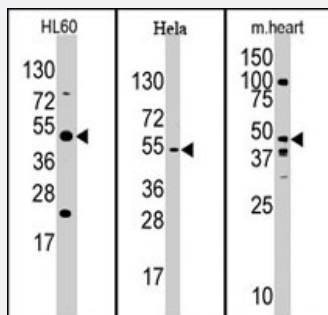


# JMJD6 polyclonal antibody

Catalog # PAB2219

Size 400 uL

## Applications



### Western Blot (Cell lysate)

Western blot analysis of JMJD6 polyclonal antibody (Cat # PAB2219) in mouse heart, HeLa, and HL-60 cell line lysates. PTDSR (N-term) (arrow) was detected using the purified polyclonal antibody.

## Specification

<b>Product Description</b>	Rabbit polyclonal antibody raised against synthetic peptide of JMJD6.
<b>Immunogen</b>	A synthetic peptide (conjugated with KLH) corresponding to N-terminus of human JMJD6.
<b>Host</b>	Rabbit
<b>Reactivity</b>	Human, Mouse
<b>Form</b>	Liquid
<b>Purification</b>	Protein G purification
<b>Recommend Usage</b>	Western Blot (1:1000) The optimal working dilution should be determined by the end user.
<b>Storage Buffer</b>	In PBS (0.09% sodium azide)
<b>Storage Instruction</b>	Store at 4°C. For long term storage store at -20°C. Aliquot to avoid repeated freezing and thawing.
<b>Note</b>	This product contains sodium azide: a POISONOUS AND HAZARDOUS SUBSTANCE which should be handled by trained staff only.

## Applications

- Western Blot (Cell lysate)

Western blot analysis of JMJD6 polyclonal antibody (Cat # PAB2219) in mouse heart, Hela, and HL-60 cell line lysates. PTDSR (N-term) (arrow) was detected using the purified polyclonal antibody.

## Gene Info — JMJD6

Entrez GeneID [23210](#)

Protein Accession# [NP\\_055982:Q6AYK2](#)

Gene Name JMJD6

Gene Alias KIAA0585, PSR, PTDSR, PTDSR1

Gene Description jumonji domain containing 6

Omim ID [604914](#)

Gene Ontology [Hyperlink](#)

**Gene Summary** This gene encodes a nuclear protein with a JmjC domain. JmjC domain-containing proteins are predicted to function as protein hydroxylases or histone demethylases. This protein was first identified as a putative phosphatidylserine receptor involved in phagocytosis of apoptotic cells; however, subsequent studies have indicated that it does not directly function in the clearance of apoptotic cells, and questioned whether it is a true phosphatidylserine receptor. Multiple transcript variants encoding different isoforms have been found for this gene. [provided by RefSeq]

**Other Designations** phosphatidylserine receptor

## Publication Reference

- [Elastase-mediated phosphatidylserine receptor cleavage impairs apoptotic cell clearance in cystic fibrosis and bronchiectasis.](#)

Vandivier RW, Fadok VA, Hoffmann PR, Bratton DL, Penvari C, Brown KK, Brain JD, Accurso FJ, Henson PM.  
The Journal of Clinical Investigation 2002 Mar; 109(5):661.

Application: Flow Cyt, Human, Human monocyte-derived macrophages

- [A receptor for phosphatidylserine-specific clearance of apoptotic cells.](#)

Fadok VA, Bratton DL, Rose DM, Pearson A, Ezekewitz RA, Henson PM.  
Nature 2000 May; 405(6782):85.