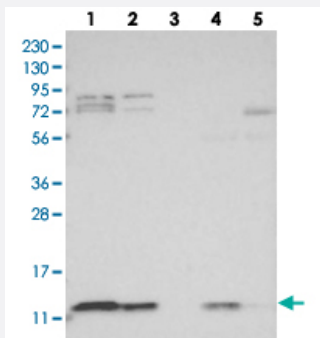


C1orf31 polyclonal antibody

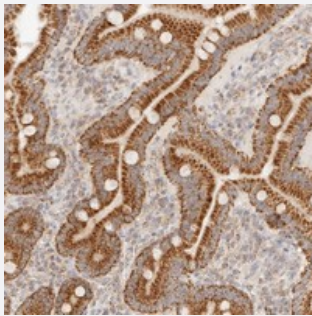
Catalog # PAB22187 Size 100 uL

Applications



Western Blot

Western blot analysis of Lane 1: RT-4, Lane 2: U-251 MG, Lane 3: Human Plasma, Lane 4: Liver, Lane 5: Tonsil with C1orf31 polyclonal antibody (Cat # PAB22187) at 1:250-1:500 dilution.



Immunohistochemistry (Formalin/PFA-fixed paraffin-embedded sections)

Immunohistochemical staining of human duodenum with C1orf31 polyclonal antibody (Cat # PAB22187) shows strong cytoplasmic positivity with a granular pattern in glandular cells at 1:20-1:50 dilution.

Specification

Product Description	Rabbit polyclonal antibody raised against recombinant C1orf31.
Immunogen	Recombinant protein corresponding to amino acids of human C1orf31.
Sequence	PSMKERQVCWGARDEYWKCLDENLEDASQCKKLRSSESSCPQQWIKYFDKRRDYLKFKEKF EAGQFEPSETTA
Host	Rabbit
Reactivity	Human
Form	Liquid

Purification	Antigen affinity purification
Isotype	IgG
Recommend Usage	Immunohistochemistry (1:20-1:50) Western Blot (1:250-1:500) The optimal working dilution should be determined by the end user.
Storage Buffer	In PBS, pH 7.2 (40% glycerol, 0.02% sodium azide)
Storage Instruction	Store at 4°C. For long term storage store at -20°C. Aliquot to avoid repeated freezing and thawing.
Note	This product contains sodium azide: a POISONOUS AND HAZARDOUS SUBSTANCE which should be handled by trained staff only.

Applications

- Western Blot

Western blot analysis of Lane 1: RT-4, Lane 2: U-251 MG, Lane 3: Human Plasma, Lane 4: Liver, Lane 5: Tonsil with C1orf31 polyclonal antibody (Cat # PAB22187) at 1:250-1:500 dilution.

- Immunohistochemistry (Formalin/PFA-fixed paraffin-embedded sections)

Immunohistochemical staining of human duodenum with C1orf31 polyclonal antibody (Cat # PAB22187) shows strong cytoplasmic positivity with a granular pattern in glandular cells at 1:20-1:50 dilution.

Gene Info — C1orf31

Entrez GeneID	388753
Protein Accession#	Q5JTJ3
Gene Name	C1orf31
Gene Alias	-
Gene Description	chromosome 1 open reading frame 31
Gene Ontology	Hyperlink
Other Designations	OTTHUMP00000036046 hypothetical protein LOC388753