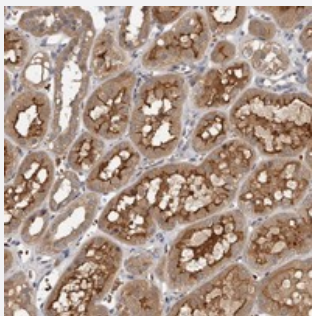


# KIF26B polyclonal antibody

Catalog # PAB22182      Size 100 uL

## Applications



### Immunohistochemistry (Formalin/PFA-fixed paraffin-embedded sections)

Immunohistochemical staining of human kidney with KIF26B polyclonal antibody (Cat # PAB22182) shows distinct cytoplasmic and membranous positivity in tubular cells.

## Specification

<b>Product Description</b>	Rabbit polyclonal antibody raised against recombinant KIF26B.
<b>Immunogen</b>	Recombinant protein corresponding to amino acids of human KIF26B.
<b>Sequence</b>	SCHSFIAQTCTFGHGGEAMAEPVASEFVSSLQNTAVVCREKPKASPDNLLILSEMGGDSFNKAAPIK GCKISTVSKAMVTISNTANLS
<b>Host</b>	Rabbit
<b>Reactivity</b>	Human
<b>Form</b>	Liquid
<b>Purification</b>	Antigen affinity purification
<b>Isotype</b>	IgG
<b>Recommend Usage</b>	Immunohistochemistry (1:200-1:500) The optimal working dilution should be determined by the end user.
<b>Storage Buffer</b>	In PBS, pH 7.2 (40% glycerol, 0.02% sodium azide)

**Storage Instruction**

Store at 4°C. For long term storage store at -20°C.  
Aliquot to avoid repeated freezing and thawing.

**Note**

This product contains sodium azide: a POISONOUS AND HAZARDOUS SUBSTANCE which should be handled by trained staff only.

## Applications

- Immunohistochemistry (Formalin/PFA-fixed paraffin-embedded sections)

Immunohistochemical staining of human kidney with KIF26B polyclonal antibody (Cat # PAB22182) shows distinct cytoplasmic and membranous positivity in tubular cells.

## Gene Info — KIF26B

**Entrez GeneID** [55083](#)

**Protein Accession#** [Q2KJY2](#)

**Gene Name** KIF26B

**Gene Alias** FLJ10157, MGC35030

**Gene Description** kinesin family member 26B

**Gene Ontology** [Hyperlink](#)

**Other Designations** -

## Disease

- [Tobacco Use Disorder](#)